



Conservation in the Sebasticook River Watershed: Understanding the Unique Landscape

Corinne Michaud-LeBlanc

Beginning with Habitat Program Climate Coordinator

Maine Department of Inland Fisheries and Wildlife

Outline



- Introduction to Beginning with Habitat
- Overview of BwH maps, tools, and conservation concepts
- Understanding the SRLT landscape and conservation opportunities
- *Themes:* Landscape and watershed-level planning, connectivity, biodiversity



Introduction



Species



Habitats



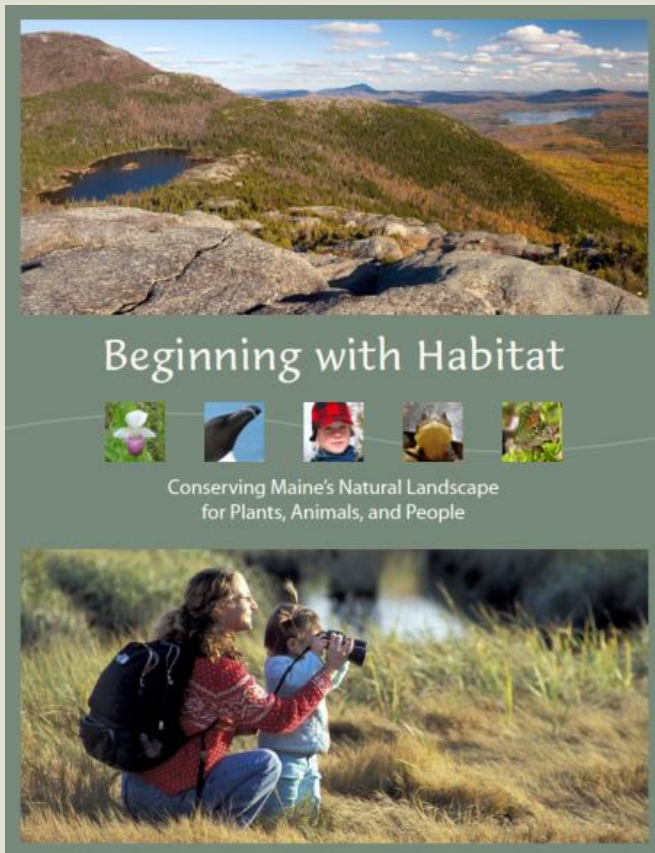
Access



**BEGINNING
WITH HABITAT**



A Resource for the Public: Beginning with Habitat



BwH is...

A landscape-based approach to achieve meaningful conservation of all native species on a developing landscape.

Purpose:

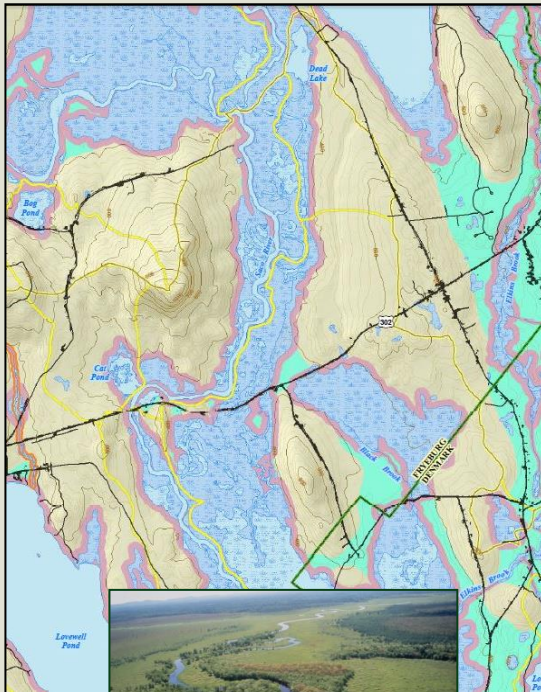
To provide the most up-to-date wildlife and plant habitat information available for use in Comprehensive, Open Space, and Conservation Planning.

Beginning with Habitat Tools

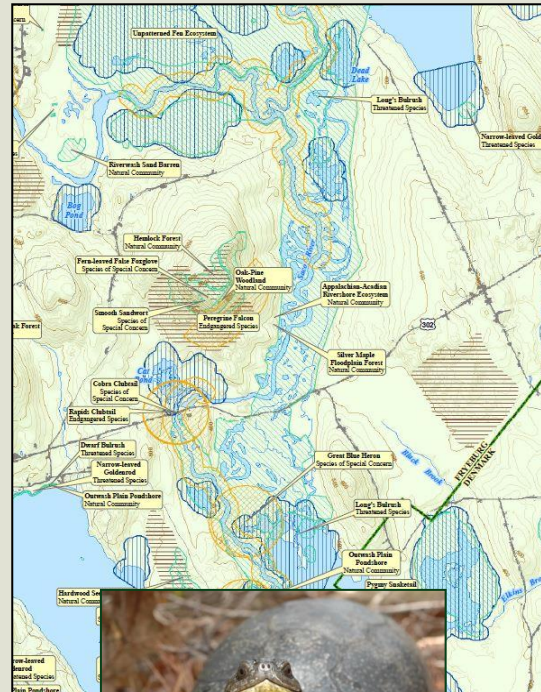


Print and Digital Maps

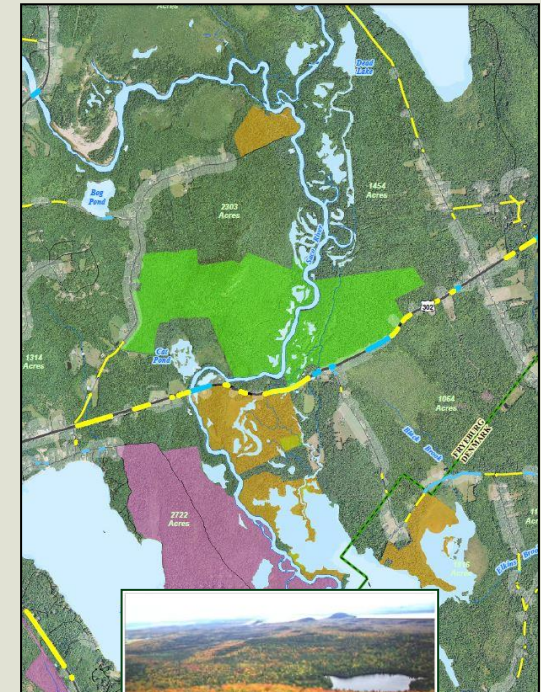
Map 1



Map 2



Map 3



Beginning with Habitat Tools



Online Map Viewer

BwH Map Viewer

Welcome **Layers** Legend

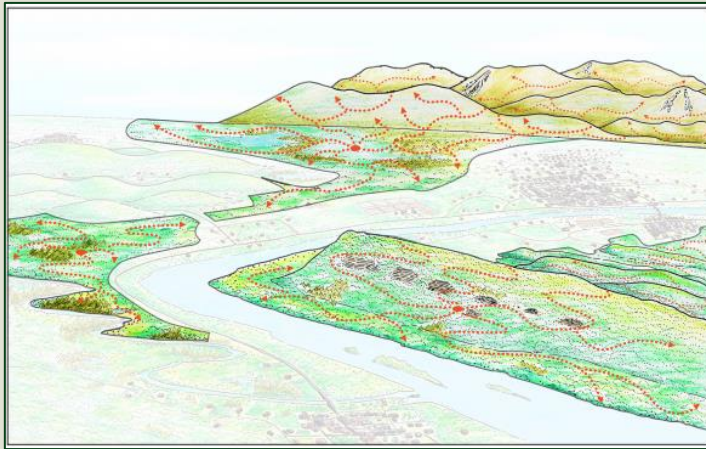
Layer Details:
Toggle layers on and off. Layers with gray checkboxes will appear once zoomed in or out to visible scale.

- Locator
 - State Of Maine Parcels
 - City/Township
 - Developed Land/Impervious Surfaces
 - Drainage Divides
- Important Natural Resources and Habitats
 - Physical Natural Resources
 - Rare Wildlife, Plants and Communities
 - Aquatic Species and Habitats
 - Other Important Wildlife Habitats
- Conservation and Connectivity Planning Resources
 - Blocks and Connectors
 - Conserved Lands
 - Focus Areas

Conserving Nature's Stage



The Stage



Underlying Geology



Landforms

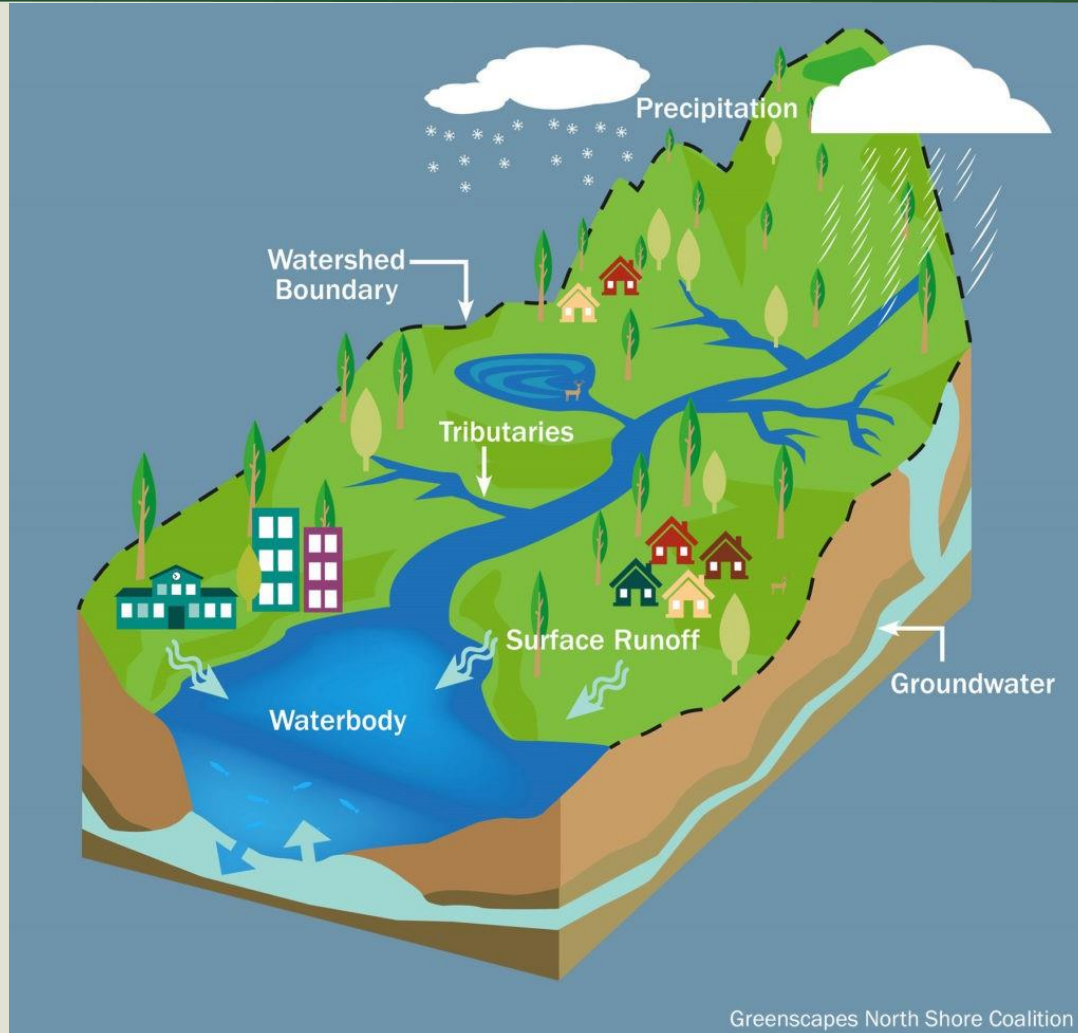


Diversity

The Actors



Watershed-Level Planning: What's a Watershed?



Greenscapes North Shore Coalition



Conservation Lands

Easement Properties

- 1 Prairie Road Wetlands
- 2 Woodsong Farm
- 3 Clifford Homestead
- 4 Sheble Homestead
- 6 Lawrence Family
- 6 Bog Road Woodlot
- 7 Connor Mill Trail
- 8 Carlson Woods
- 9 Albion Bread Farm
- 10 Mullen's Woods
- 11 Cheeseman Farm
- 12 Blue Heron Farm

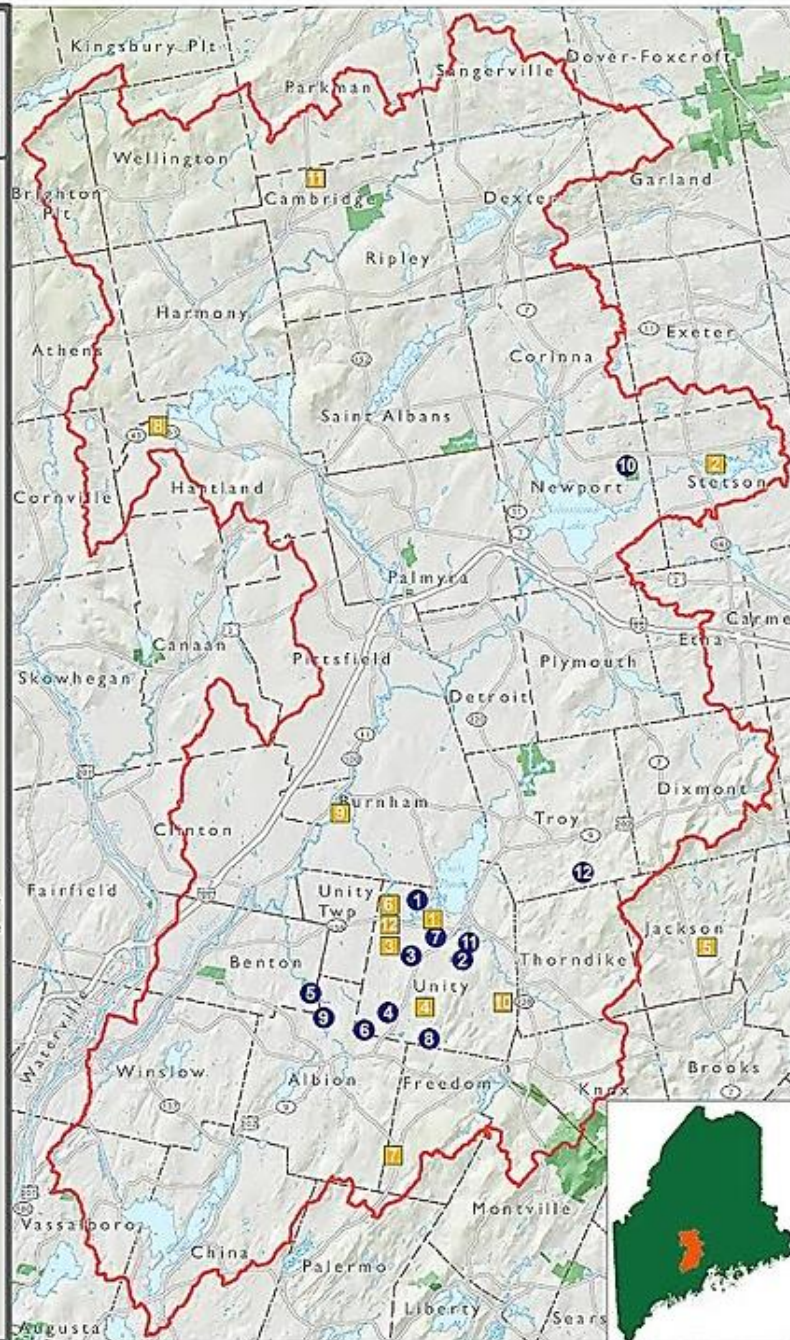
Community Lands

- 1 Wesley Road Wetland
- 2 Pleasant Lake Preserve
- 3 Fowler Bog Preserve
- 4 Kanokulus Bog Preserve
- 5 Great Farm Brook Preserve
- 6 Moulton's Mill Preserve
- 7 Freedom Forest Preserve
- 8 Great Moose Wetland
- 9 Albert J Sousa Preserve
- 10 Richardson Memorial Preserve
- 11 Cambridge Woodlands Preserve
- 12 Rines Wetlands & Wildlife Preserve

- Other Conservation Lands
- Watershed Boundary
- Lakes and Ponds
- Interstate
- Primary Roads
- Town Boundaries



SRILT revised 04/30/14



Watershed-level Planning: Benefits and Opportunities



- Greater conservation impact
 - Big picture planning vs. site by site
 - Measurable progress towards regional goals
- Protect and amplify co-benefits to the community
 - Recreational opportunities, preservation of rural and scenic character, improved air and water quality, carbon storage, landscape resiliency...many more!
- Shared vision and goals between partners and stakeholders
 - Proactive, long-term planning for balancing conservation and development, protecting landscape functions
 - Opportunities for community outreach and education

Watershed-Level Planning: Conservation Actions



- Conservation and connectivity of parcels with high value habitats, rare species, unique features, and connected functions
- Restoration of aquatic connectivity across miles of waterways
- Improvement of water quality, flood attenuation
- Expansion and connectivity of hiking trails, water access opportunities



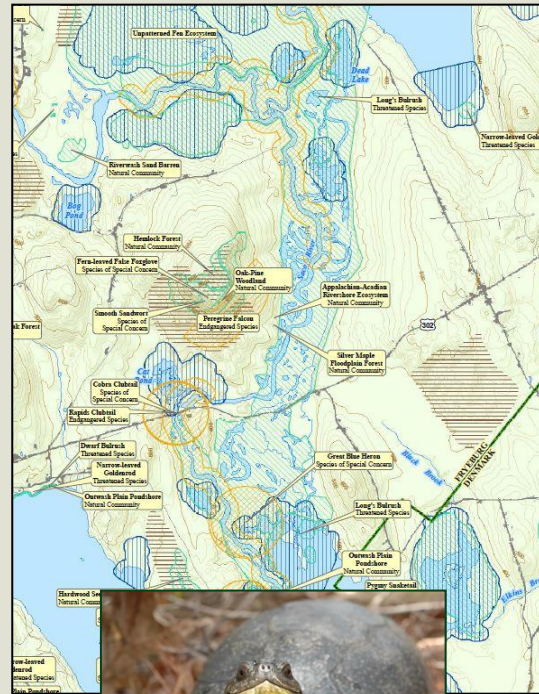
Beginning with Habitat Approach



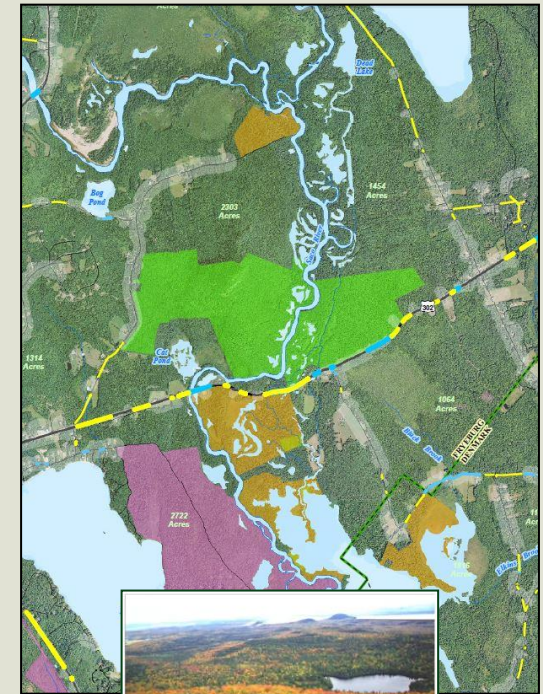
Map 1



Map 2

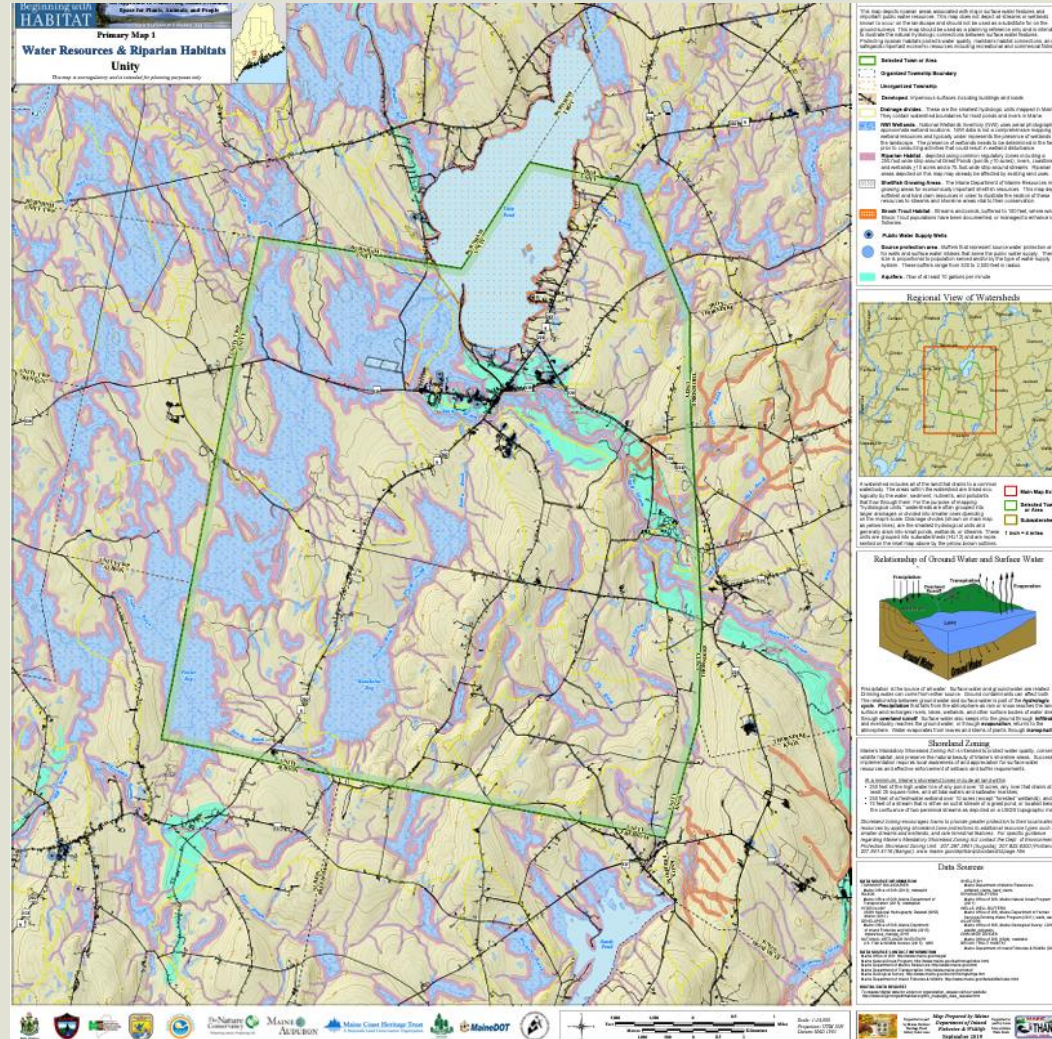


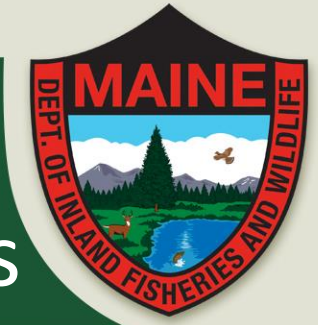
Map 3



Water Resources and Riparian Habitats

- BwH Map 1
 - Great ponds
 - Wetlands
 - Streams
 - Riparian buffers
 - Aquifers

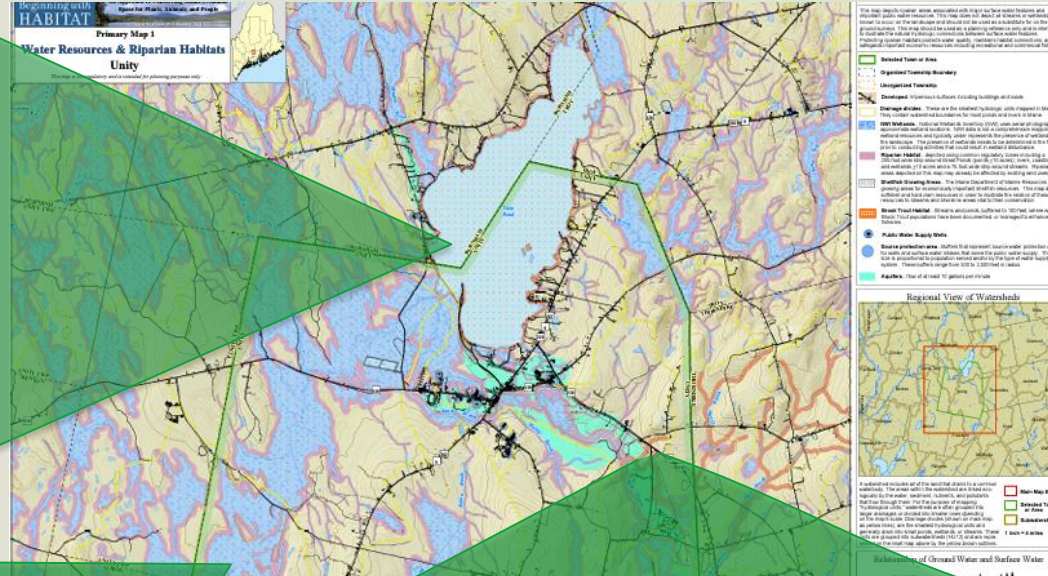




Water Resources and Riparian Habitats



Waldo County Soil and Water District



Kanokolis Bog, Andy Reed



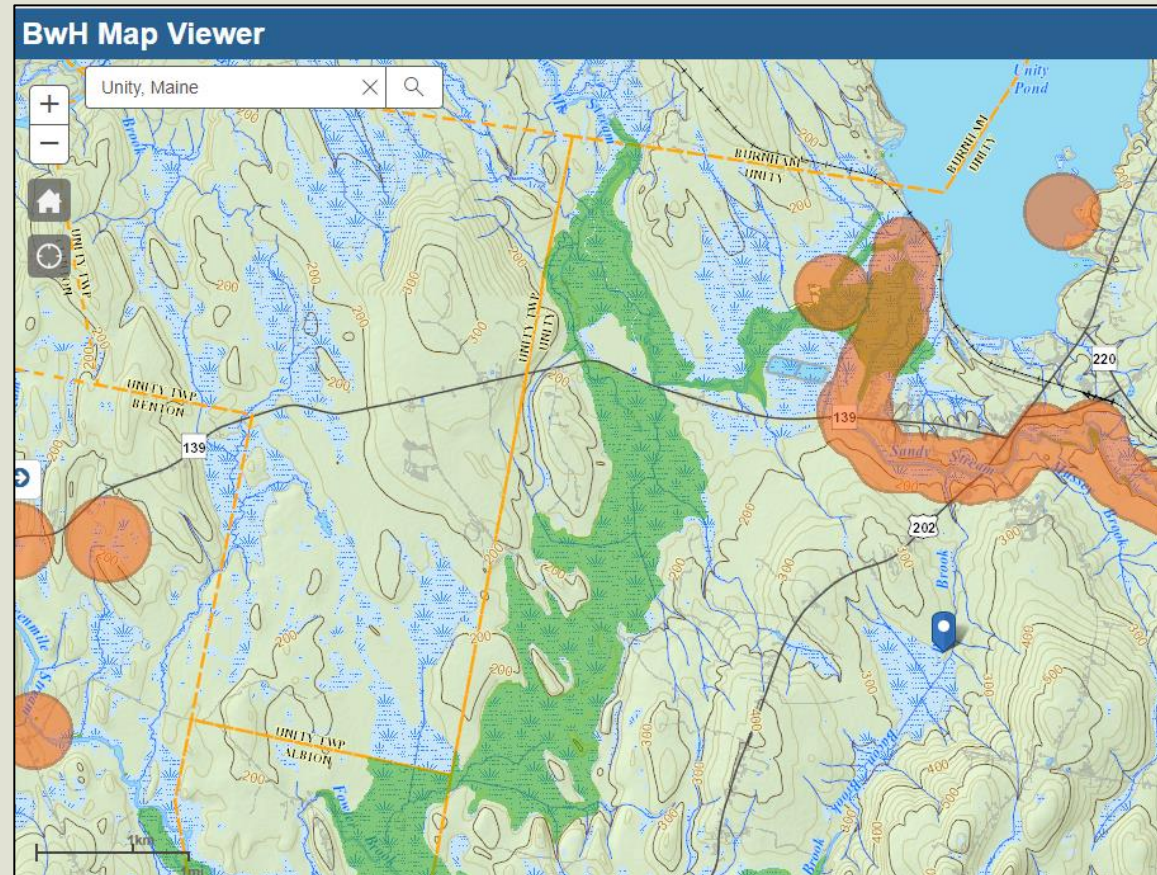
Merry Gallagher

High Value Plant and Animal Habitats



- BwH Map 2

- Threatened and Endangered wildlife, Species of Special Concern
- Rare Plants
- Rare and Exemplary Natural Communities
- Important Wildlife Habitats

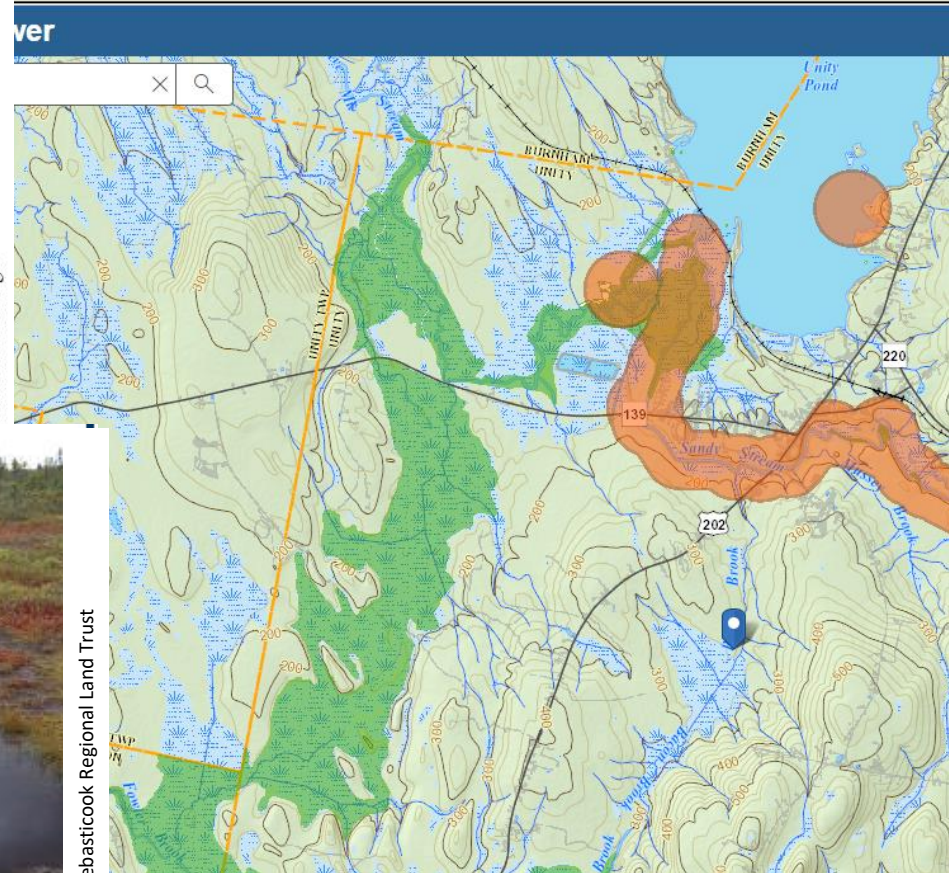




High Value Plant and Animal Habitats



Mark McCollough



Sebastcook Regional Land Trust



Paul Cyr

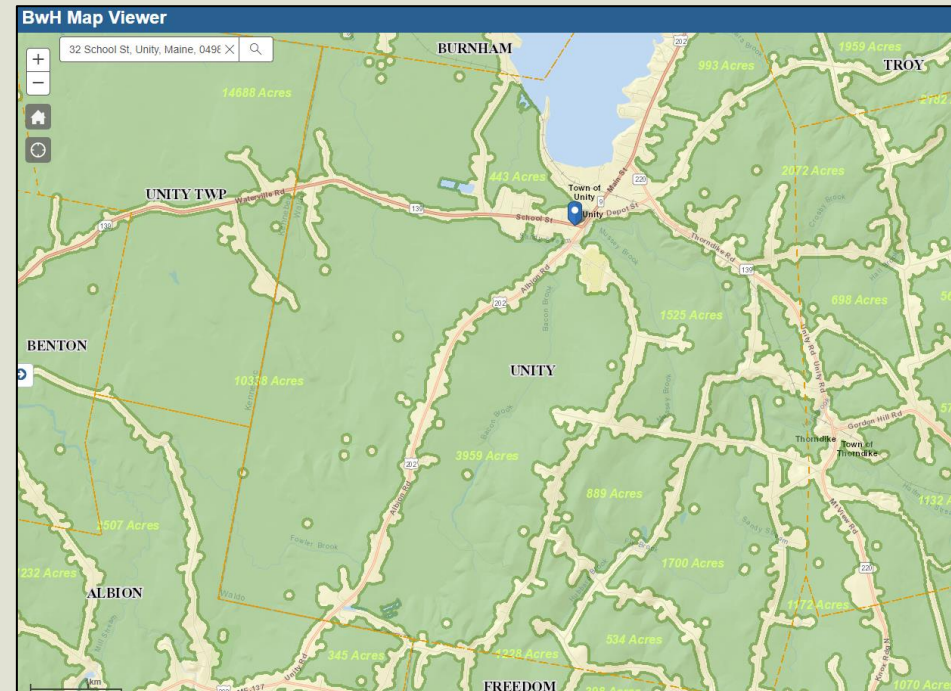


Undeveloped Blocks and Connections



- BwH Map 3

- Large undeveloped blocks essential for maintaining species diversity, water quality, natural resource industries, and much more
- Acreage of large blocks
- Potential habitat connections
- Existing conserved lands

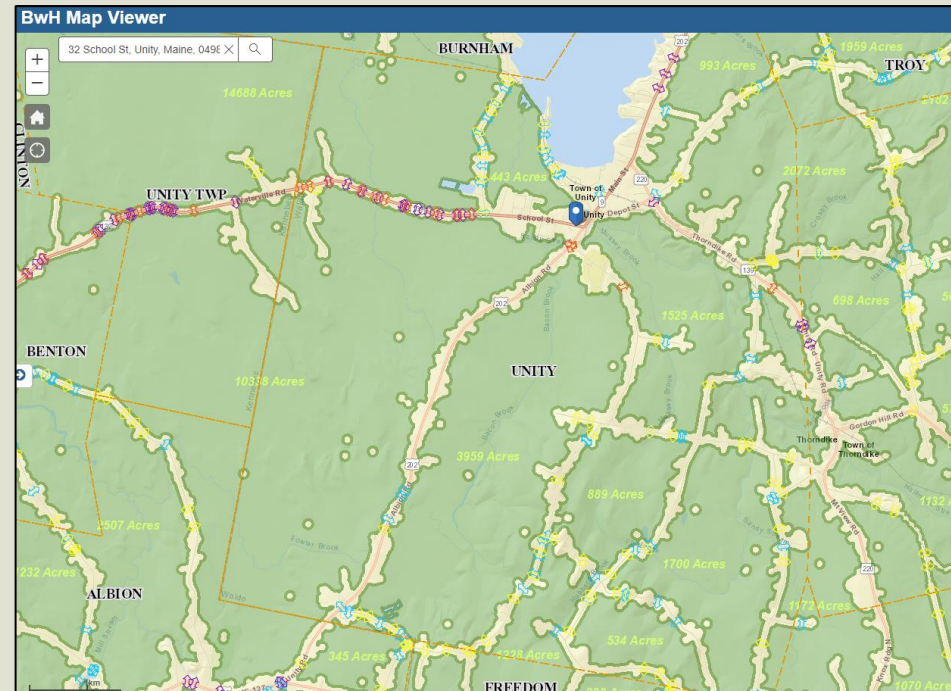


Undeveloped Blocks and Connections



- BwH Map 3

- Large undeveloped blocks essential for maintaining species diversity, water quality, natural resource industries, and much more
- Acreage of large blocks
- Potential habitat connections
- Existing conserved lands

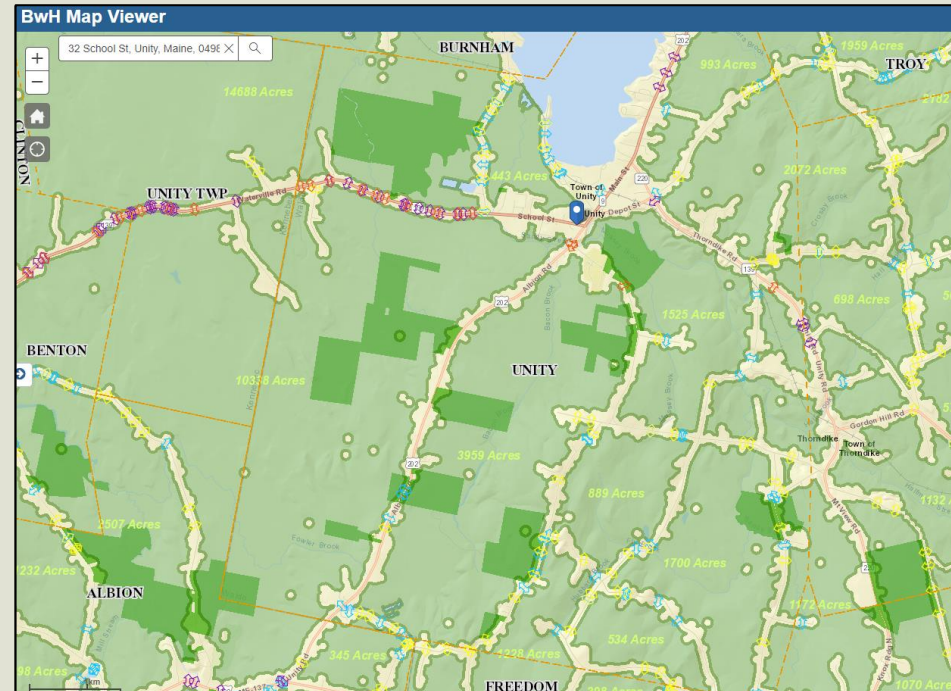


Undeveloped Blocks and Connections



- BwH Map 3

- Large undeveloped blocks essential for maintaining species diversity, water quality, natural resource industries, and much more
- Acreage of large blocks
- Potential habitat connections
- Existing conserved lands



Habitat Block Size Requirements for Wildlife in Maine: UNDEVELOPED

RACCOON

HARE

COYOTE

SMALL RODENT

PORCUPINE

BOBCAT

COTTONTAIL

BEAVER

BLACK BEAR

SQUIRREL

WEASEL

MINK

FISHER

WOODCHUCK

DEER

MUSKRAT

MOOSE

RED FOX

SONGBIRDS

SHARP-SHINNED HAWK

BALD EAGLE

SKUNK

COOPER'S HAWK

HARRIER

BROAD-WINGED HAWK

GOSHAWK

KESTREL

RED-TAIL HAWK

HORNED OWL

RAVEN

BARRED OWL

OSPREY

TURKEY VULTURE

TURKEY

MOST REPTILES

GARTER SNAKE

RING-NECK SNAKE

MOST AMPHIBIANS

WOOD FROG

Habitat Block Size Requirements for Wildlife in Maine: 100 -499 ACRES

RACCOON

HARE

SMALL RODENT

PORCUPINE

COTTONTAIL

BEAVER

SQUIRREL

WEASEL

MINK

WOODCHUCK

DEER

MUSKRAT

RED FOX

SONGBIRDS

SHARP-SHINNED HAWK

SKUNK

COOPER'S HAWK

HARRIER

BROAD-WINGED HAWK

KESTREL

HORNED OWL

BARRED OWL

OSPREY

TURKEY VULTURE

TURKEY

MOST REPTILES

GARTER SNAKE

RING-NECK SNAKE

MOST AMPHIBIANS

WOOD FROG



Habitat Block Size Requirements for Wildlife in Maine: **1-19 ACRES**

RACCOON

SMALL RODENT

COTTONTAIL

SQUIRREL

MUSKRAT

RED FOX

SONGBIRDS

SKUNK

MOST REPTILES

MOST AMPHIBIANS



Undeveloped Blocks and Connections: Conservation Strategies

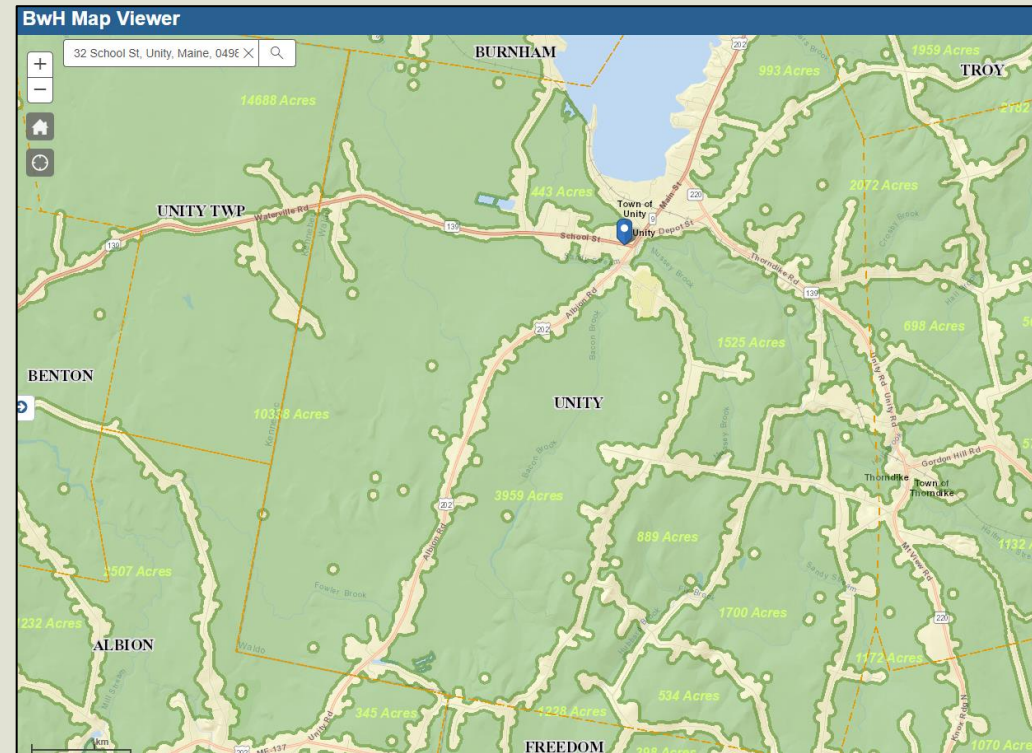


– Land conservation:

- Protection of key undeveloped blocks
- Identify and protect important corridors between blocks

– Policy tools:

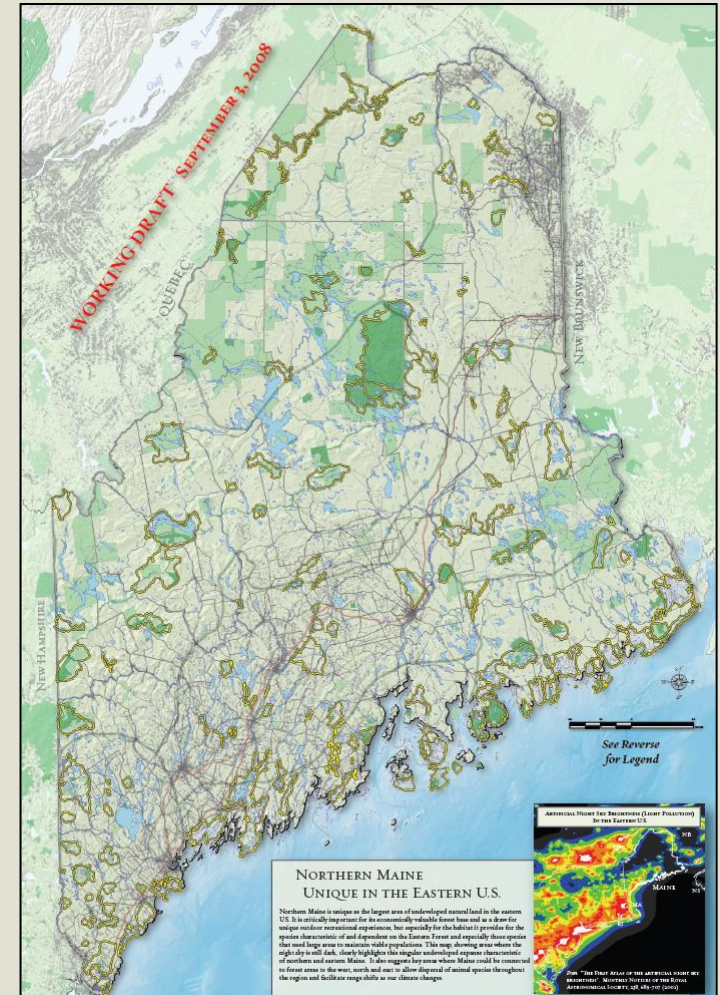
- Land use planning and zoning
- Ordinance development



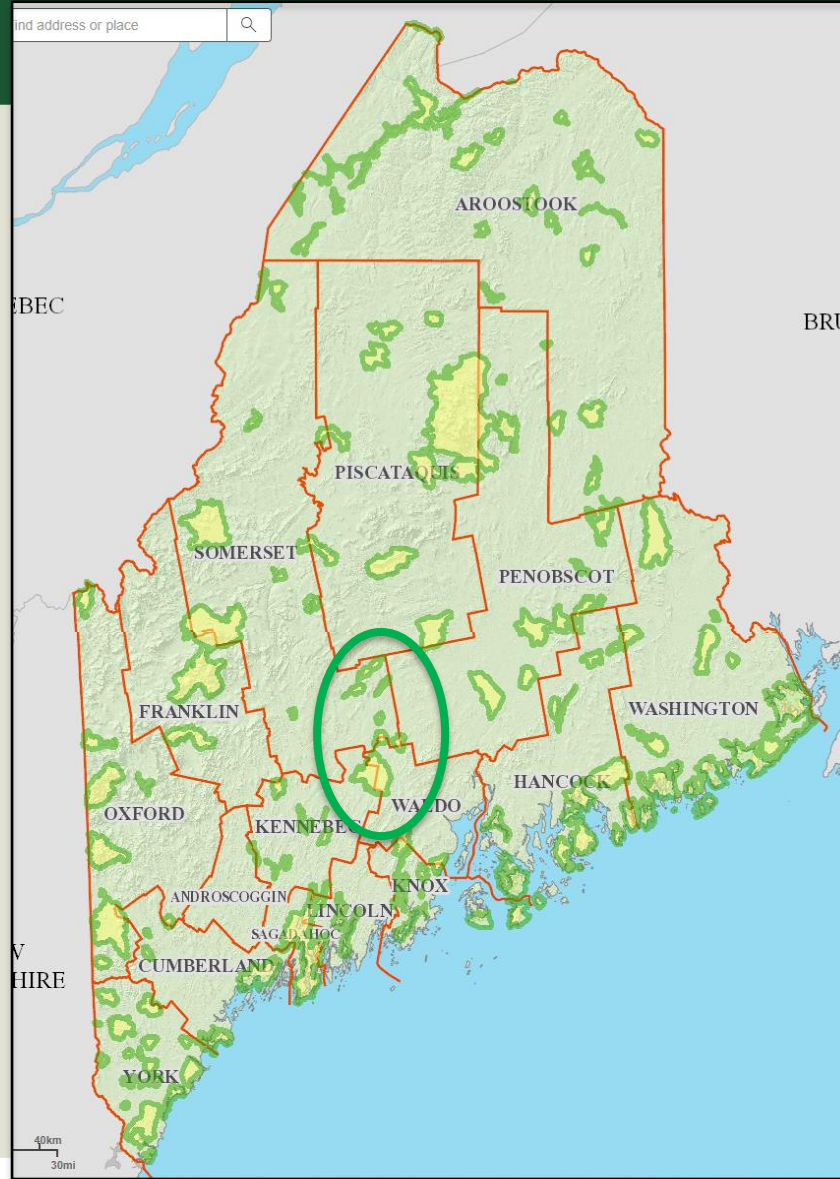
Focus Areas of Statewide Significance



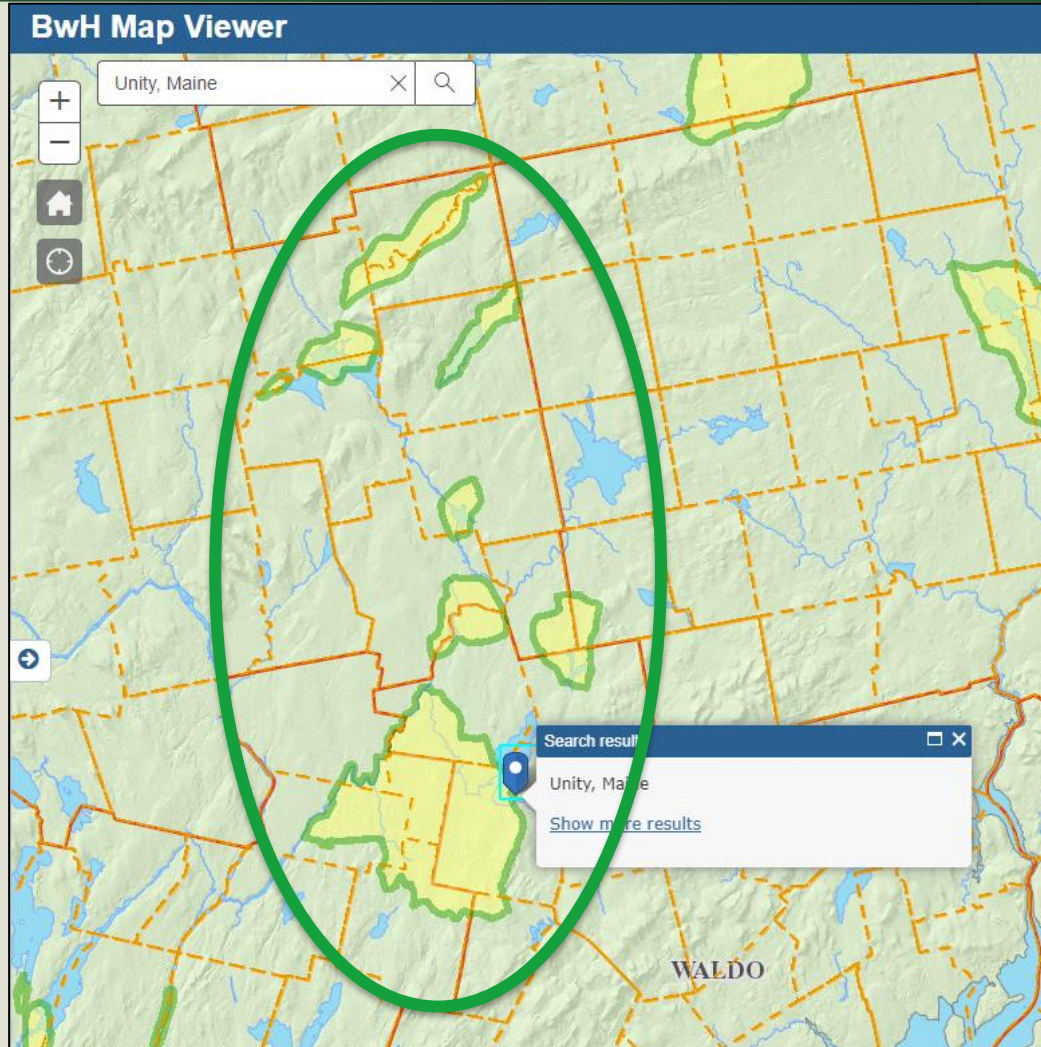
- Natural areas that contain unusually rich concentrations of at-risk species and habitats.
- Focus Areas represent the very highest quality concentrations of important habitats in the state.
- Towns and land trusts and other partners can work together to plan and capitalize on opportunities where conservation goals coincide.



Focus Areas of Statewide Significance



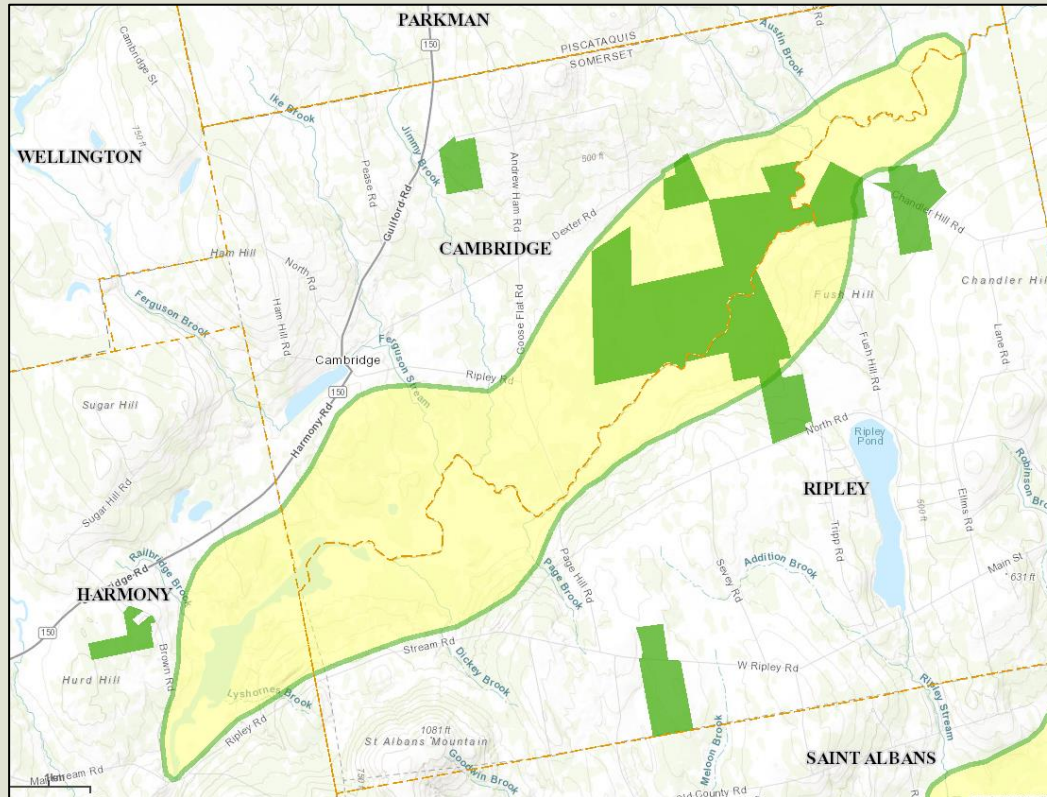
Focus Areas of Statewide Significance



Focus Areas of Statewide Significance



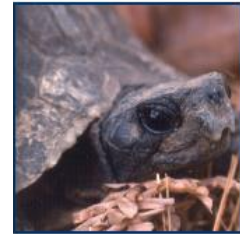
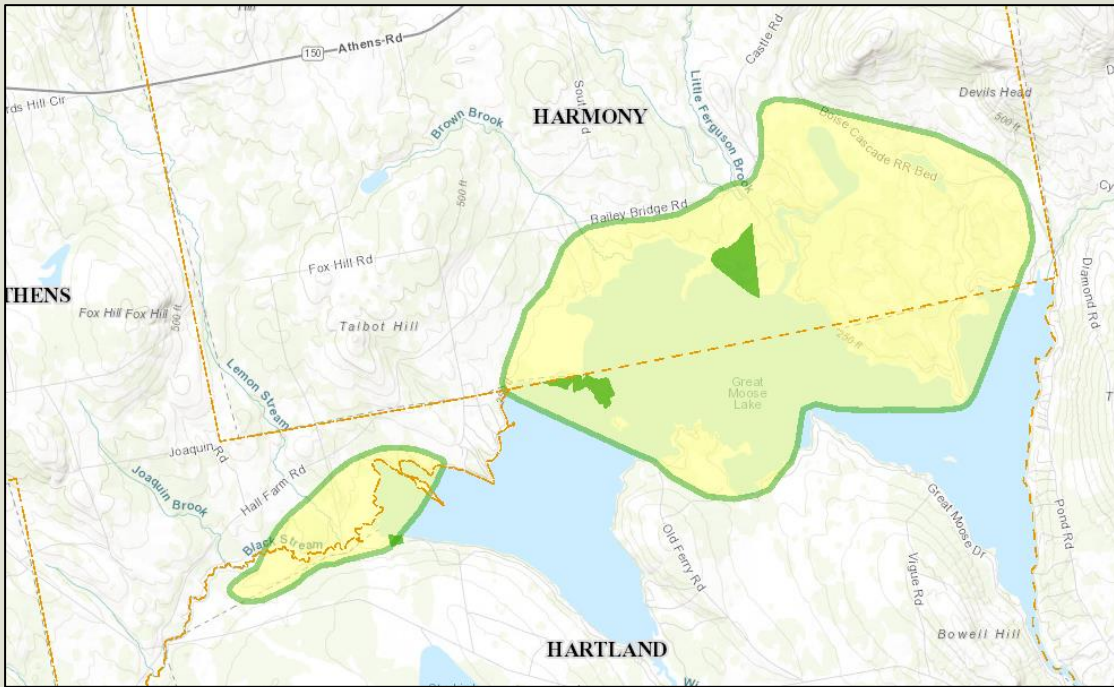
- Upper Sebasticook River Wetlands



Focus Areas of Statewide Significance



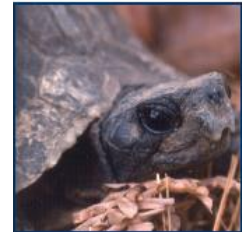
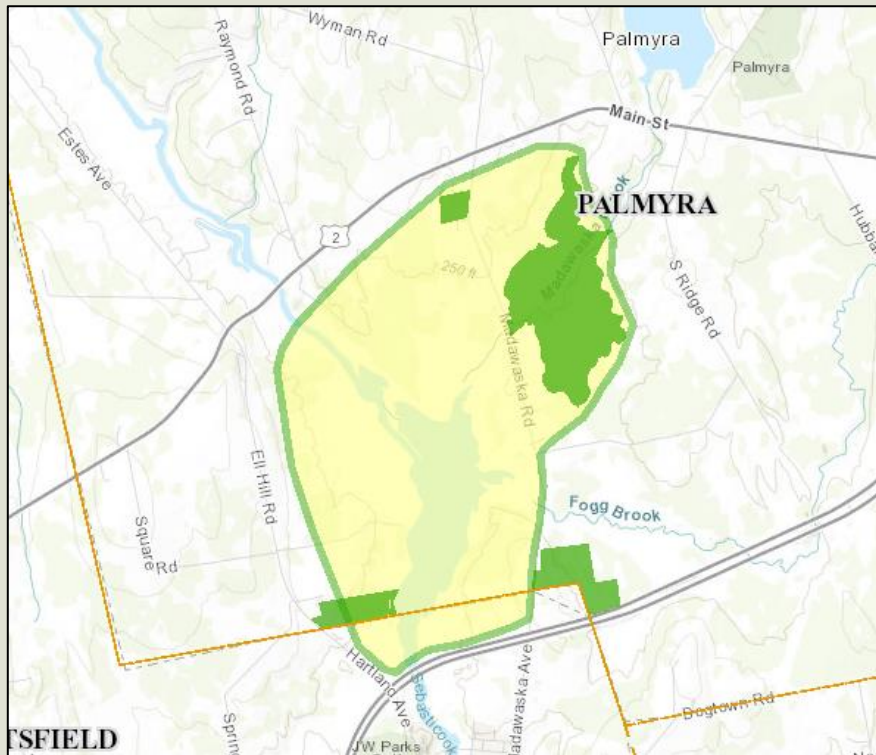
- Great Moose Lake



Focus Areas of Statewide Significance



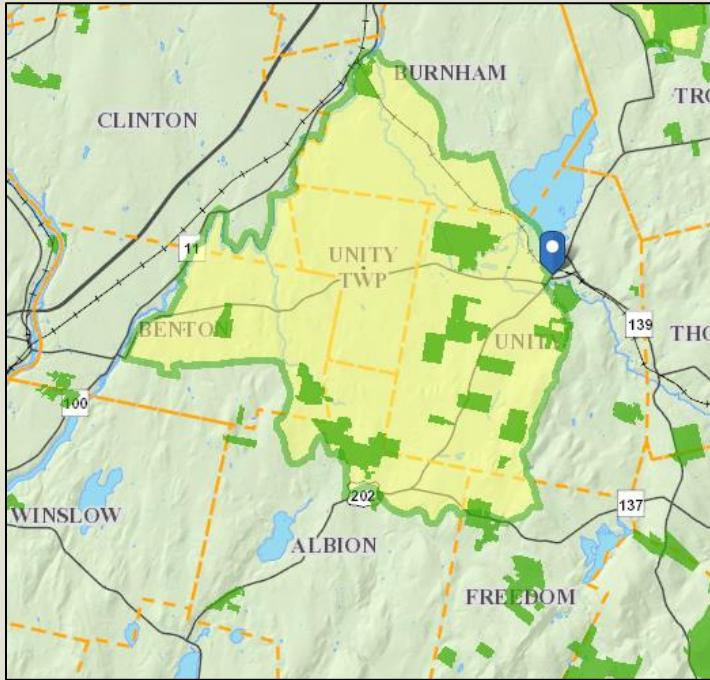
- Douglas Pond and Madawaska Bog



Focus Areas of Statewide Significance



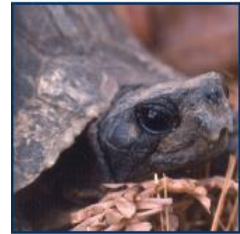
- Unity Wetlands



E. Peter Steenstra/USFWS



David L. Kinney



Focus Areas of Statewide Significance: Conservation Strategies



- Work with willing landowners to secure permanent conservation
- Education and outreach to landowners and communities
- Maintain intact forested buffers along waterbodies and wetlands
- Monitor and remove invasive plants



Ways You Can Get Involved



- Learning about best management practices for your land
- Visiting and supporting public conserved lands
- Getting involved in conservation efforts with your town or local land trust
- Come to next week's talk!



Questions?



Corinne Michaud-LeBlanc
Beginning with Habitat Program Climate Coordinator
Maine Department of Inland Fisheries and Wildlife
Corinne.L.Michaud-LeBlanc@maine.gov
207-592-5841

PLEASE SUPPORT MAINE'S ENDANGERED & NONGAME WILDLIFE!
Purchase a Loon Plate | Check-off at Tax Time

