

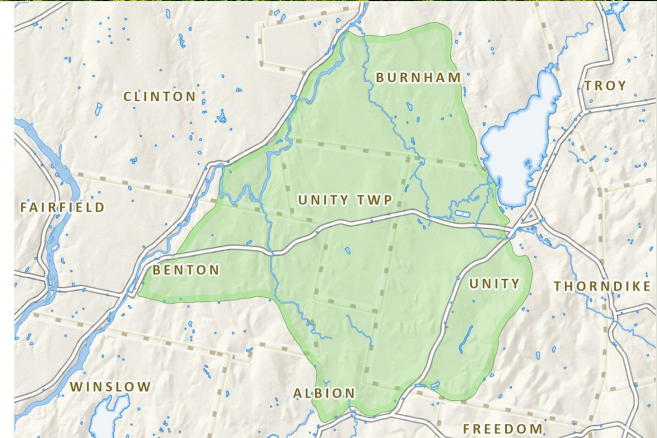
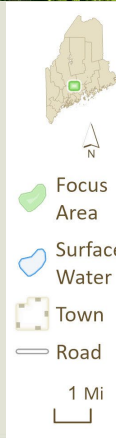


# Planning for a Resilient, Connected, and Biodiverse Sebasticook Region

Corinne Michaud-LeBlanc

Beginning with Habitat Program Climate Coordinator  
Maine Department of Inland Fisheries and Wildlife

# Topics for Today



# Beginning with Habitat



**BEGINNING  
WITH HABITAT**



**BwH** is a landscape-based approach to achieve meaningful conservation of all native species on a developing landscape.

**BwH** equips Maine communities, landowners, and conservation partners with tools to protect, restore, and connect high-value ecosystems in a changing climate.

# Beginning with Habitat



**BEGINNING  
WITH HABITAT**



MAINE  
AUDUBON



The Nature  
Conservancy



Maine Forest Products Council



## Our Services



Information



Spatial Data



Technical Assistance

## Our Users



Municipalities



Landowners

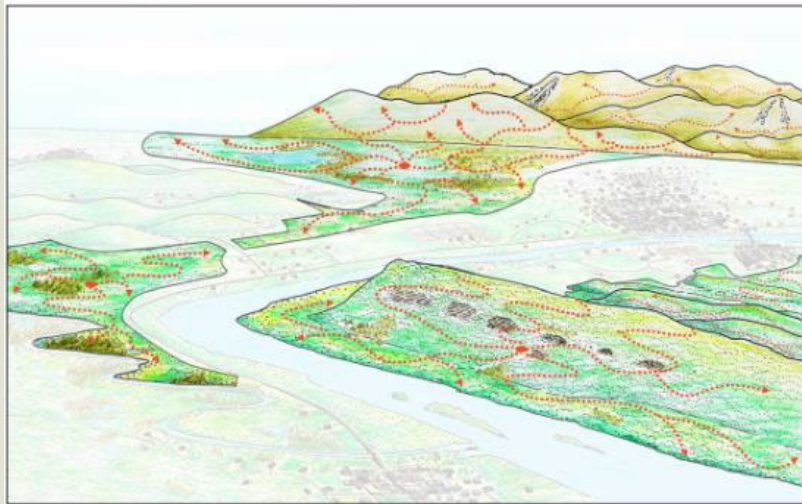


Land Trusts

# Conserving Nature's Stage



## The Stage



Underlying Geology



Landforms



Diversity

## The Actors



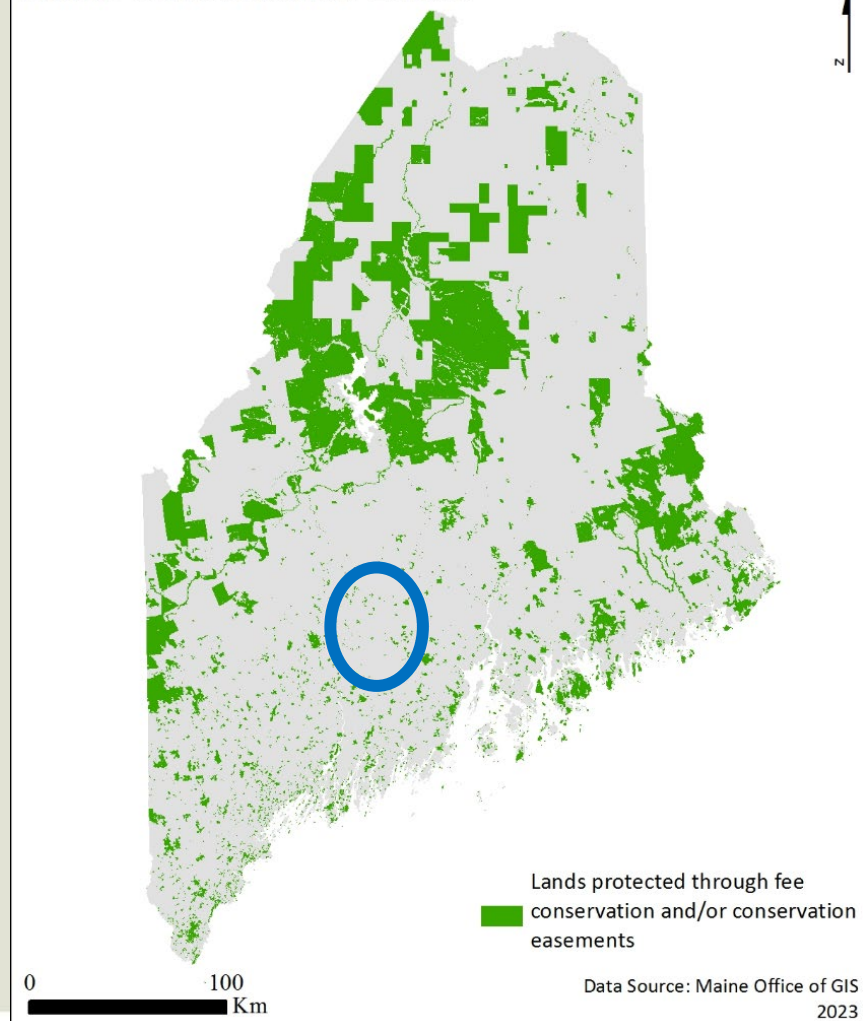
# Conserved Lands: Statewide



**2025:**

- **>4,416,922 acres**  
**(~22.3%)**  
permanently  
conserved

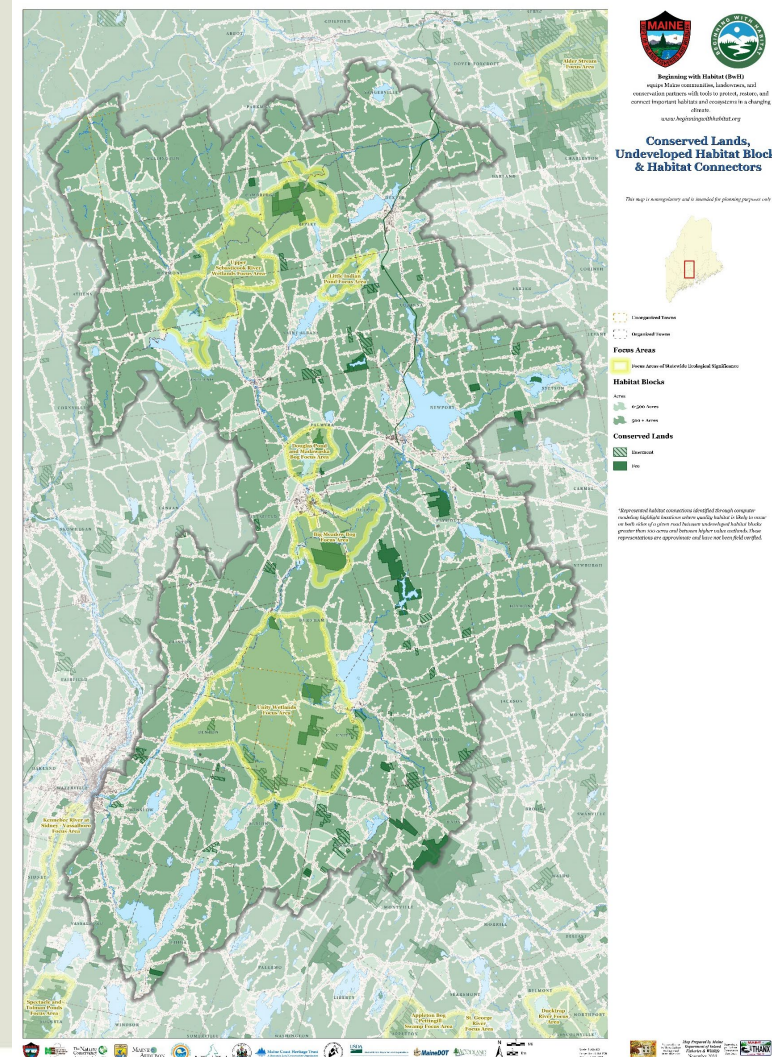
Maine Conservation Lands



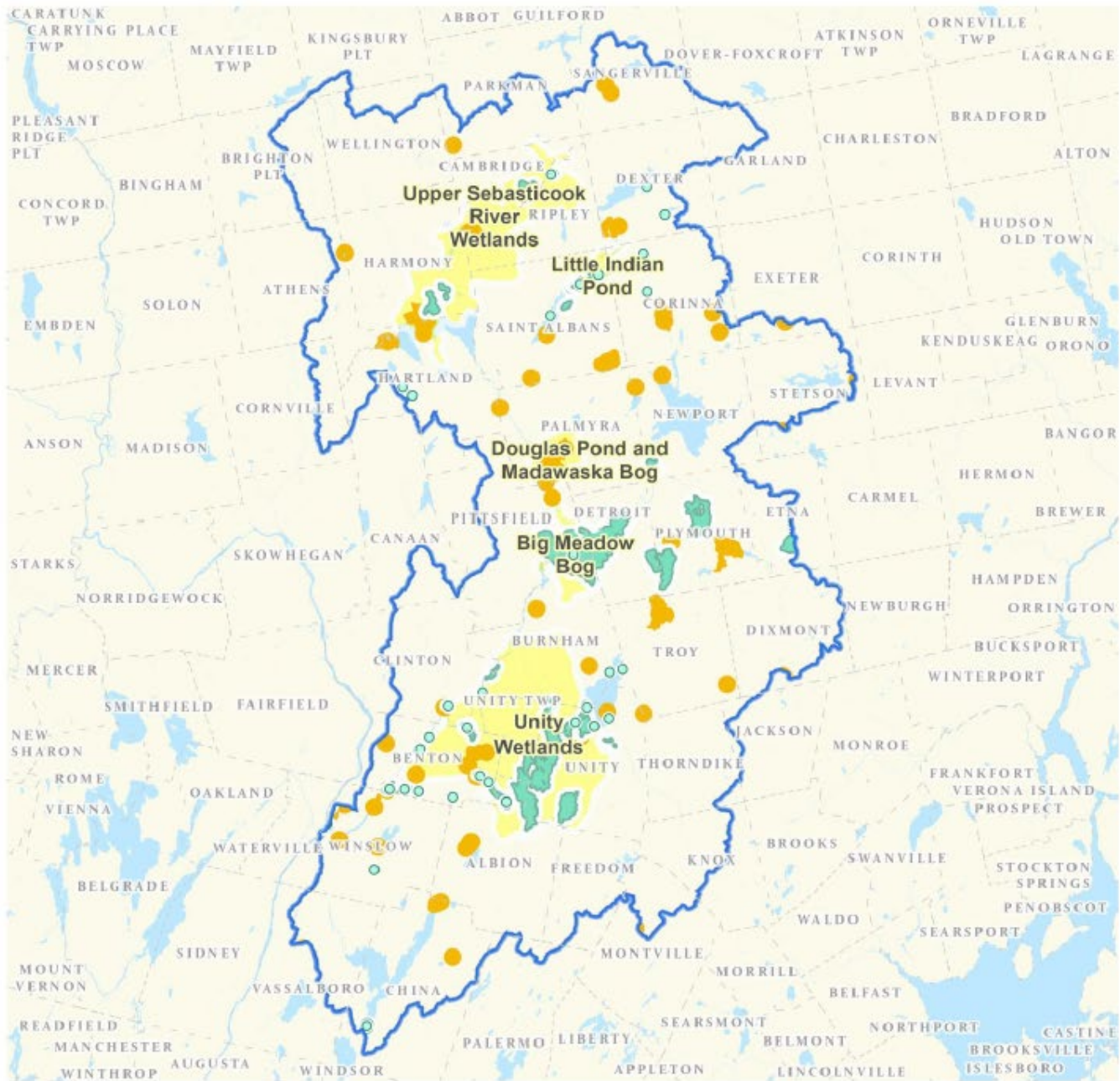
# Conserved Lands: Regionally



- **17,546 acres (2.9%)** permanently conserved within the SRLT service area
- **11 organizations** own or manage conserved lands
- **5 Focus Areas** of Statewide Ecological Significance
- Landscape of **Large Undeveloped Habitat Blocks**



# Sebasticook Regional Land Trust Service Area

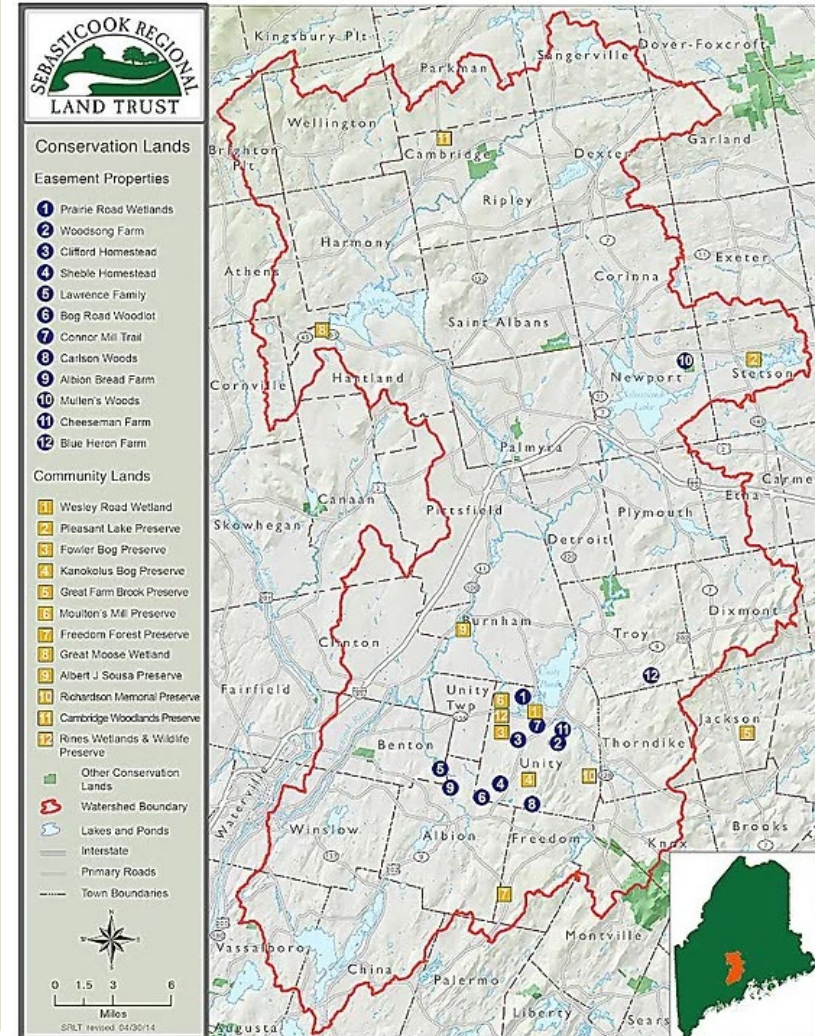


- BwH Focus Areas**
- Rare or Endangered Wildlife\***
  - Endangered, Threatened, or Special Concern Species
- Rare or Exemplary Plants and Natural Communities**
  - Rare, Threatened, and Endangered Plants
  - Rare and Exemplary Natural Communities
- ✓ **Central-interior geography**
- ✓ **5 BwH focal areas**
- ✓ **37 rare animal species**
- ✓ **13 rare plant species**
- ✓ **4 rare natural comm's**
- ✓ **Anadromous fishery**
  - Alewife
  - Blueback Herring
  - American Shad
  - Striped Bass
  - American Eel
  - Atlantic Salmon
  - Sea Lamprey

# SRLT Landscape of Partners



- 28 Municipalities mostly or wholly included
- 11 Organizations managing conserved lands
- 5 Soil and Water Conservation Districts
- 3 Regional Planning Organizations/Councils of Government
- Numerous Large and small private landowners

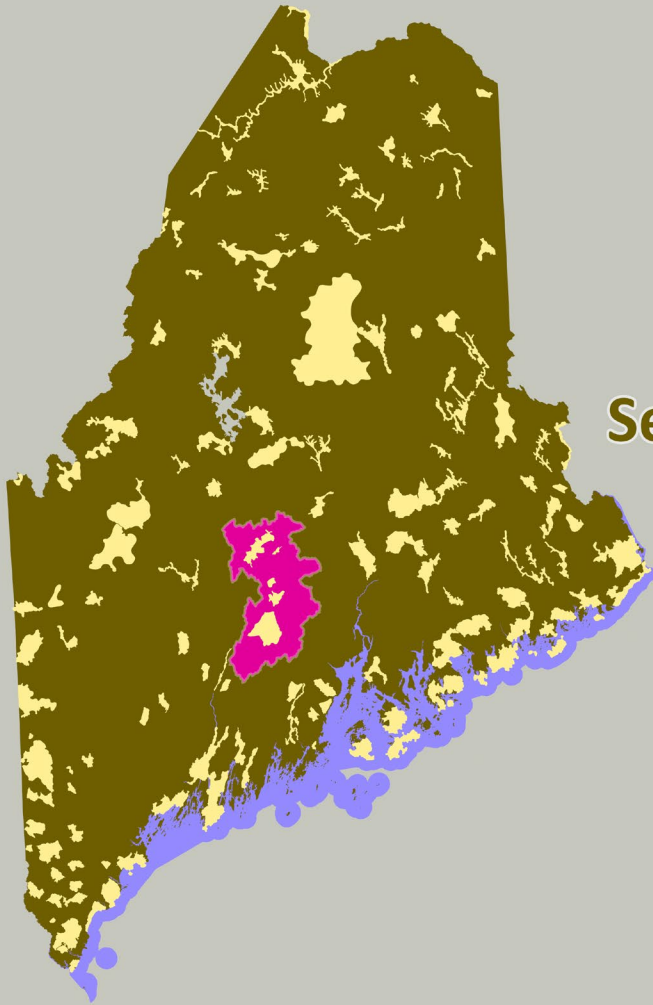




# MAINE LANDSCAPE CONSERVATION BLUEPRINT

- Habitat prioritization
- Demonstration projects
- Conservation investment plan





**Sebecicook Regional Land  
Trust Service Area**

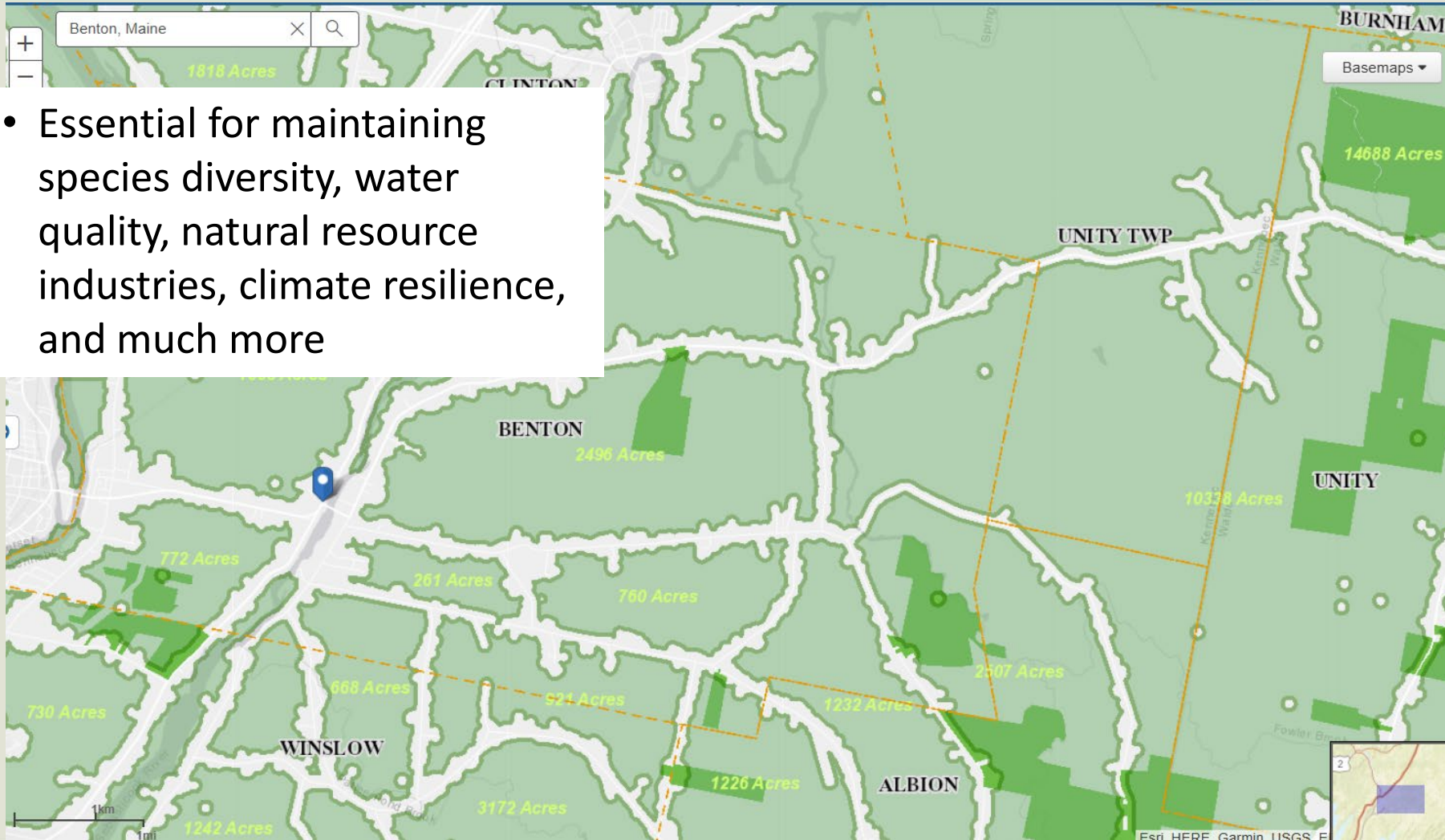
**Focus Areas**



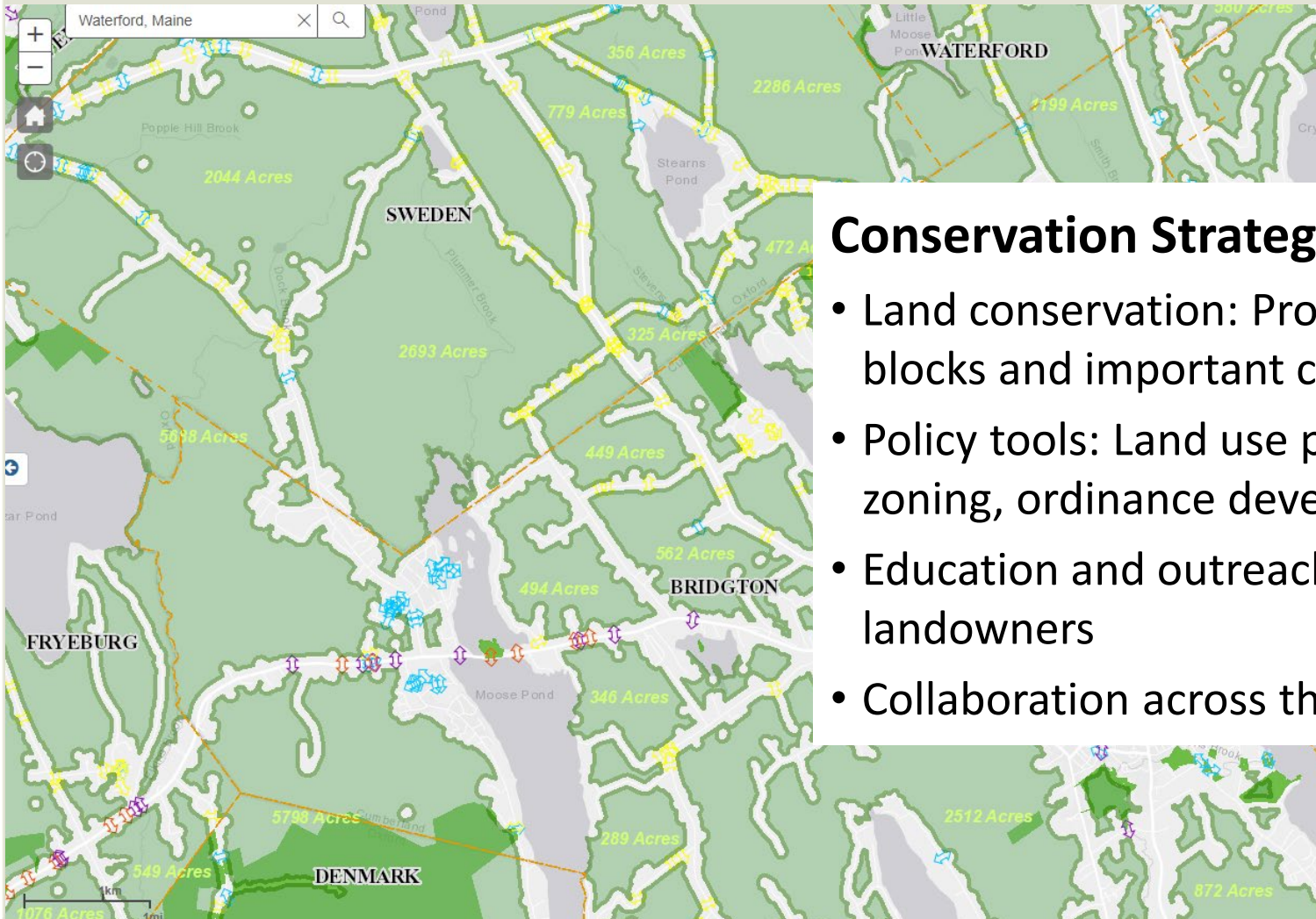
# Undeveloped Blocks and Connectors



- Essential for maintaining species diversity, water quality, natural resource industries, climate resilience, and much more



# Undeveloped Blocks and Connectors



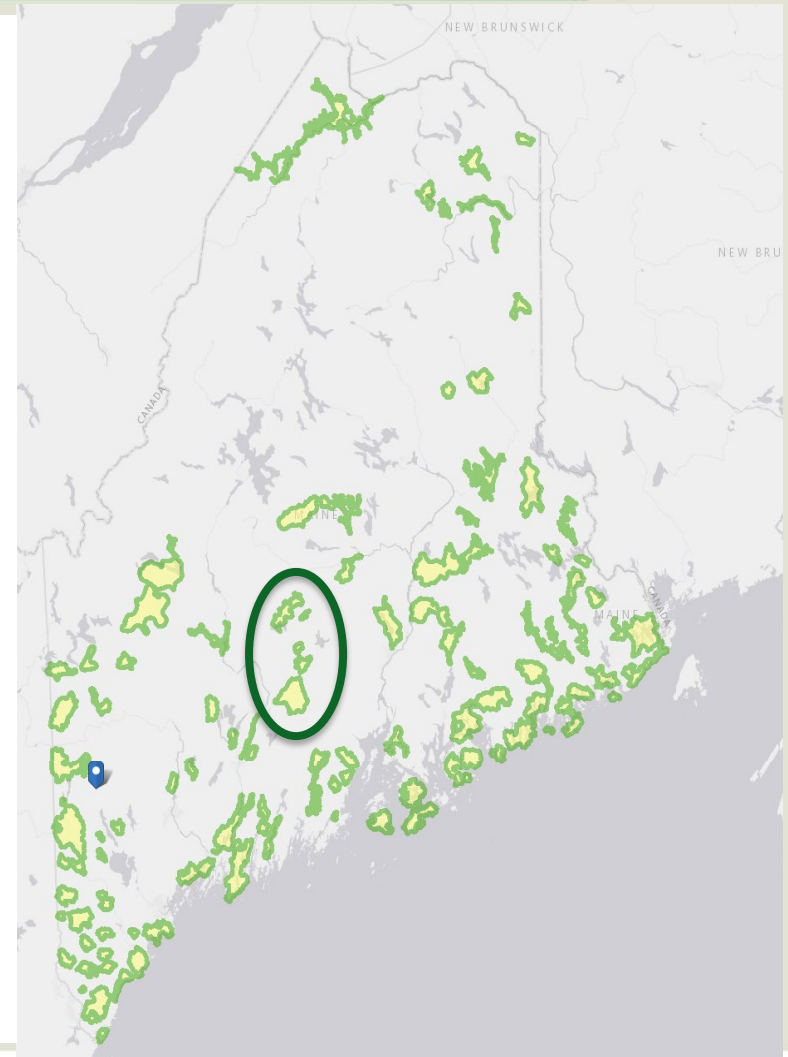
## Conservation Strategies:

- Land conservation: Protection of key blocks and important corridors
- Policy tools: Land use planning and zoning, ordinance development
- Education and outreach to landowners
- Collaboration across the watershed

# Focus Areas of Statewide Significance



- Natural areas that contain rich concentrations of at-risk species and habitats
- Focus Areas represent the very highest quality concentrations of important habitats in the state
- Connectivity between high quality undeveloped habitats is essential for climate resilience
- Towns, land trusts, landowners, and other partners can work together where conservation goals coincide



# Focus Areas of Statewide Significance



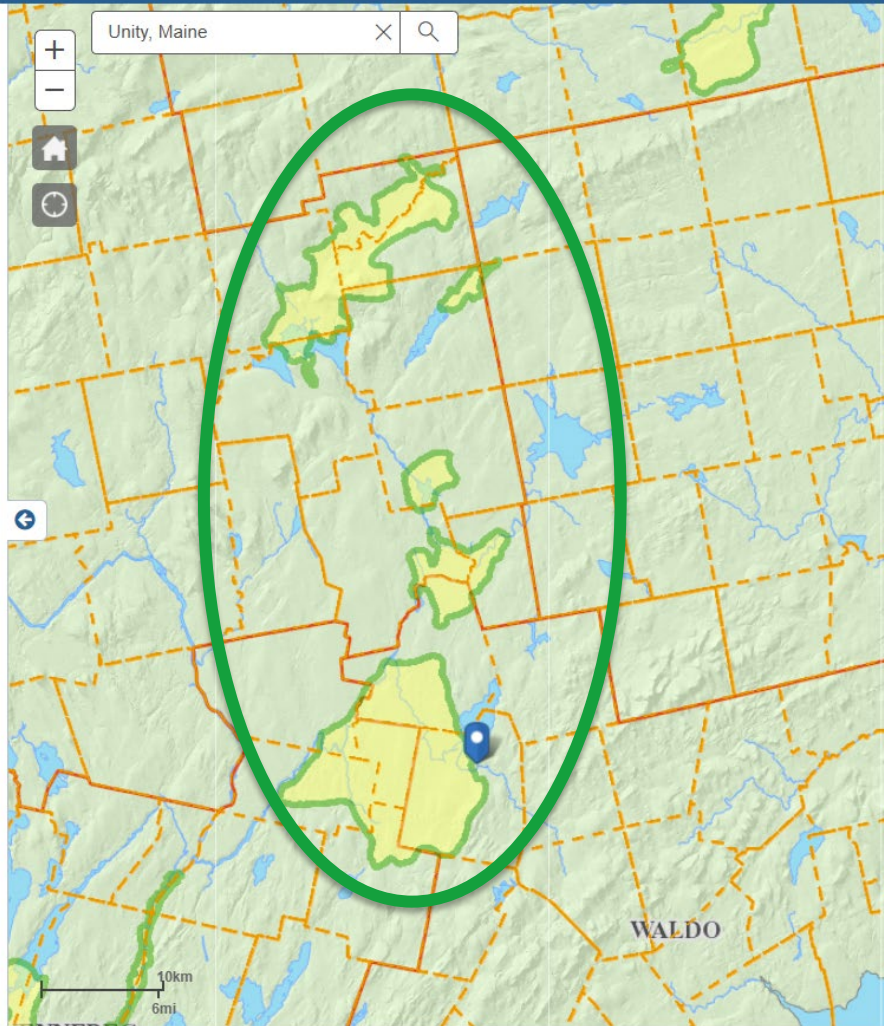
## BwH Map Viewer

Welcome **Layers** Legend

### Layer Details:

Toggle layers on and off. Layers with gray checkbox will appear once zoomed in or out to visible scale.

- Locator ≡
- State Of Maine Parcels
- ▶  City/Township ≡
- ▶  Developed Land/Impervious Surfaces ≡
- Drainage Divides
- ▶  Physical Natural Resources ≡
- ▶  Wildlife Habitats- (*Sensitive Species Masked*) ≡
- ▶  Plants and Natural Communities- (*not displayed in Unorganized Territories*) ≡
- ▼  Conservation and Connectivity Planning Resources ≡
- ▶  Undeveloped Habitat Blocks ≡
- Connectors
- ▶  Conserved Lands ≡
- ▶  Focus Areas- Overlapping Organized Towns ≡



# Focus Areas of Statewide Significance Upper Sebasticook River Wetlands



Focus Area



Surface Water



Town



Road



1 Mi

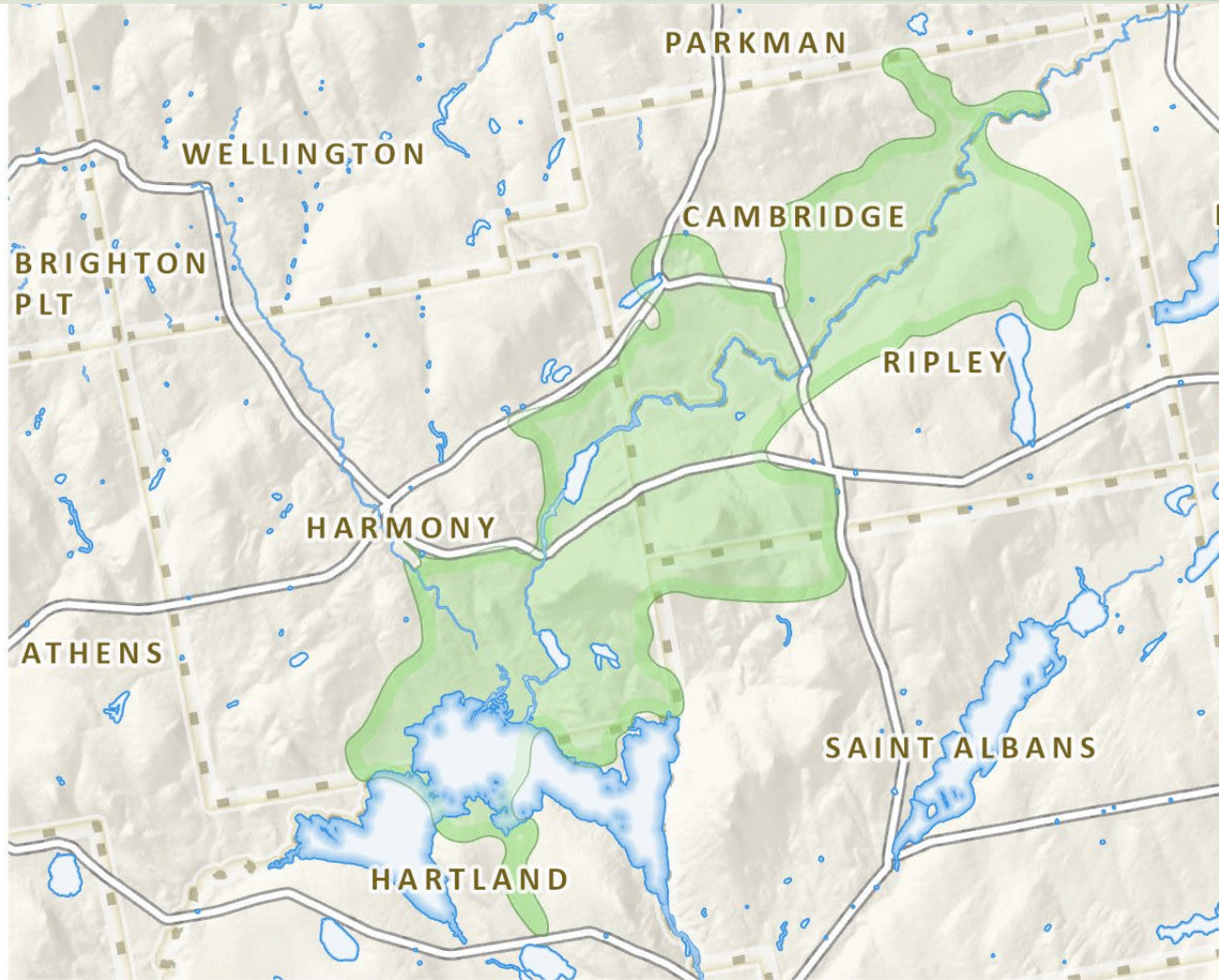
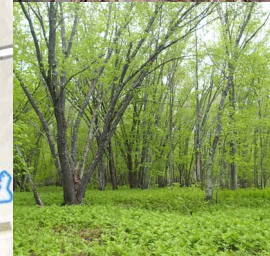
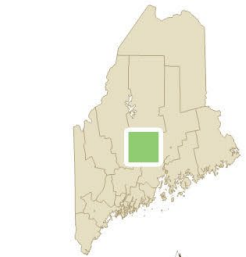
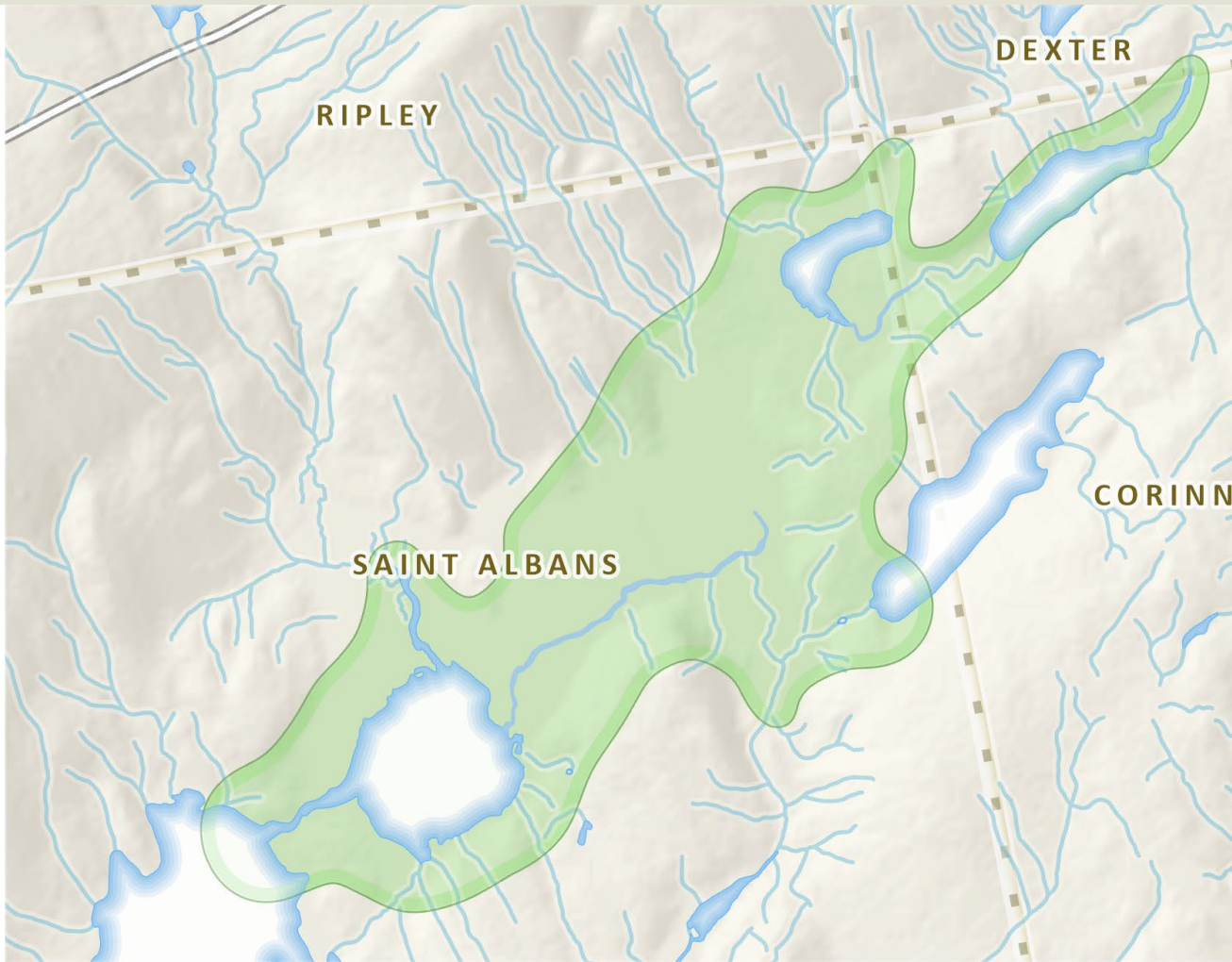


Photo by J. Hayden



# Focus Areas of Statewide Significance

## Little Indian Pond



Focus Area



Town



Surface Water



Road





1,000 Feet

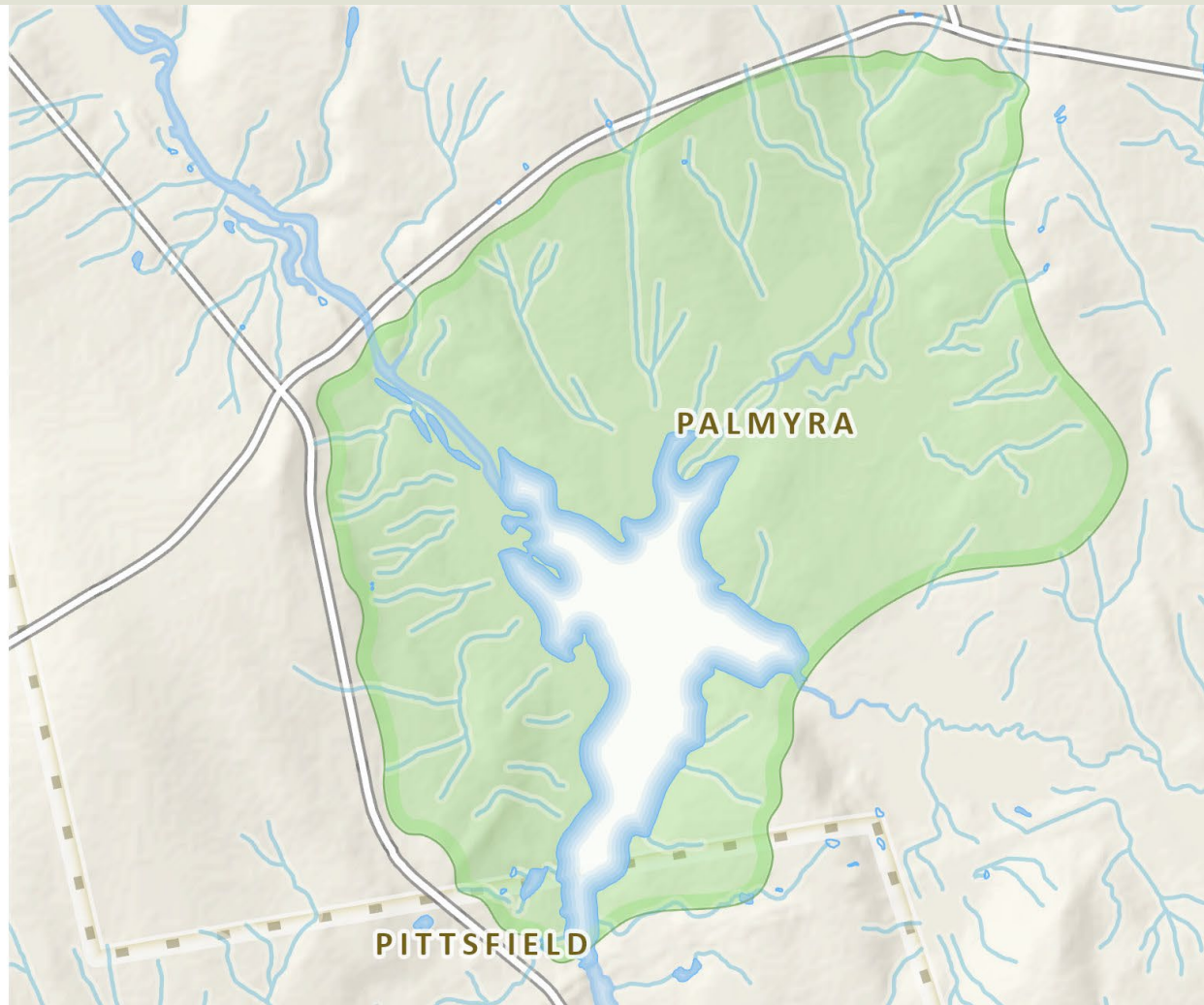


# Focus Areas of Statewide Significance Douglas Pond and Madawaska Bog



-  Focus Area
-  Town
-  Surface Water
-  Road

1 Mi



# Focus Areas of Statewide Significance

## Big Meadow Bog



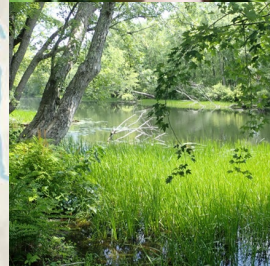
Focus Area

Town

Surface Water

Road

1 Mi



# Focus Areas of Statewide Significance

## Unity Wetlands



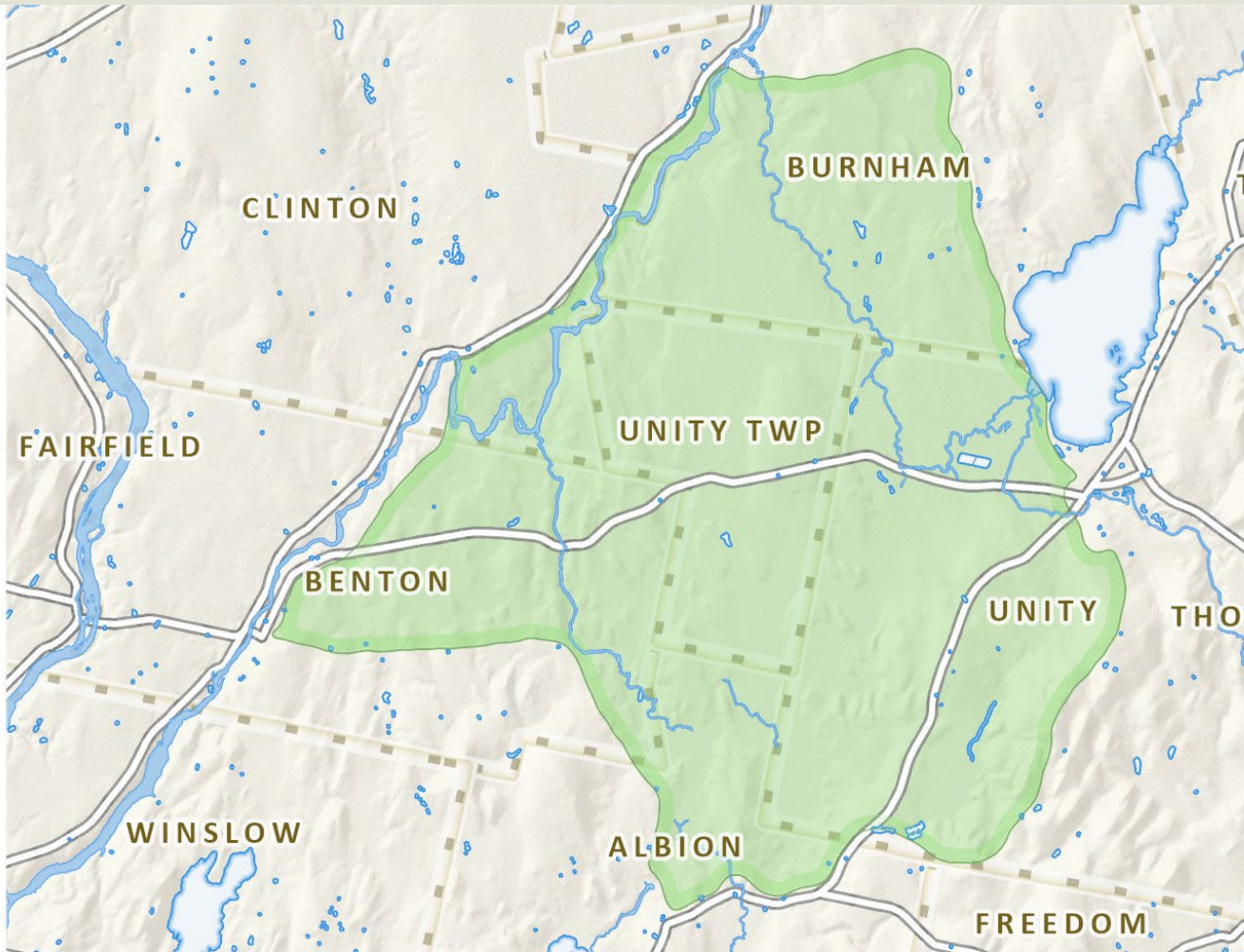
Focus Area

Surface Water

Town

Road

1 Mi



Mussel Photos by E. Nedeau



# Focus Areas of Statewide Significance Conservation Strategies



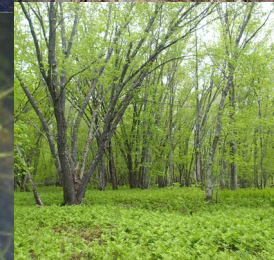
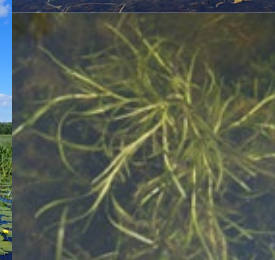
- Work with willing landowners to conserve and connect key areas
- Education and outreach to landowners and communities
- Maintain forested buffers along waterbodies and wetlands
- Monitor and remove invasive plants
- Identify and restore aquatic barriers
- See descriptions for additional information



Photo by J. Hayden



Mussel Photos by E. Nedeau



# Conservation in a Changing Climate



- Protecting and connecting key features and corridors statewide is essential for resiliency
  - Conservation of unique and biodiverse Focus Areas
  - Protection and restoration of corridors
  - Municipal tools to protect undeveloped blocks, open spaces, and riparian corridors
  - Local, Regional, and State collaboration



# Questions?



Corinne Michaud-LeBlanc  
Beginning with Habitat Program Climate Coordinator  
Maine Department of Inland Fisheries and Wildlife  
[Corinne.L.Michaud-LeBlanc@maine.gov](mailto:Corinne.L.Michaud-LeBlanc@maine.gov)  
207-592-5841

